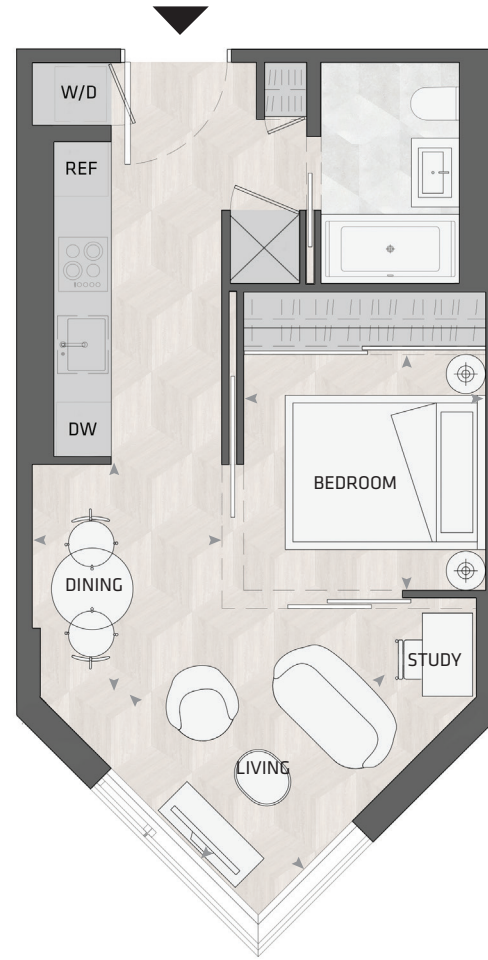


# KING

## HOME 611 E



1BD.77

**1 Bedroom + Study**  
**1 Bathroom**

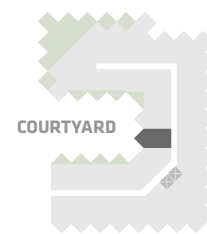
**Total Living:**  
**484 ft<sup>2</sup>**

Interior Living:  
484 ft<sup>2</sup>

Exterior Living:  
N/A

<b>LIVING</b>	8' 8" X 9' 5"
<b>DINING</b>	6' 7" X 9' 3"
<b>BEDROOM</b>	8' 9" X 8' 6"

KING STREET WEST



**EAST MOUNTAIN KEYPLAN**



All dimensions and specifications are approximate. Certain plans are reverse or mirror image. Balcony square footages are estimated and may vary from that stated. Please see Sales Representative for details. Furniture not included. Refer to key plan for unit location and orientation. E. 6 O.E.

# KING

## HOME 509 E



1BD.29

**1 Bedroom + Study  
1 Bathroom**

**Total Living:  
545 ft<sup>2</sup>**

Interior Living:  
545 ft<sup>2</sup>

Exterior Living:  
N/A

<b>LIVING</b>	10' 6" X 8' 5"
<b>DINING</b>	6' 5" X 9' 5"
<b>BEDROOM</b>	9' 7" X 10' 8"

KING STREET WEST

COURTYARD

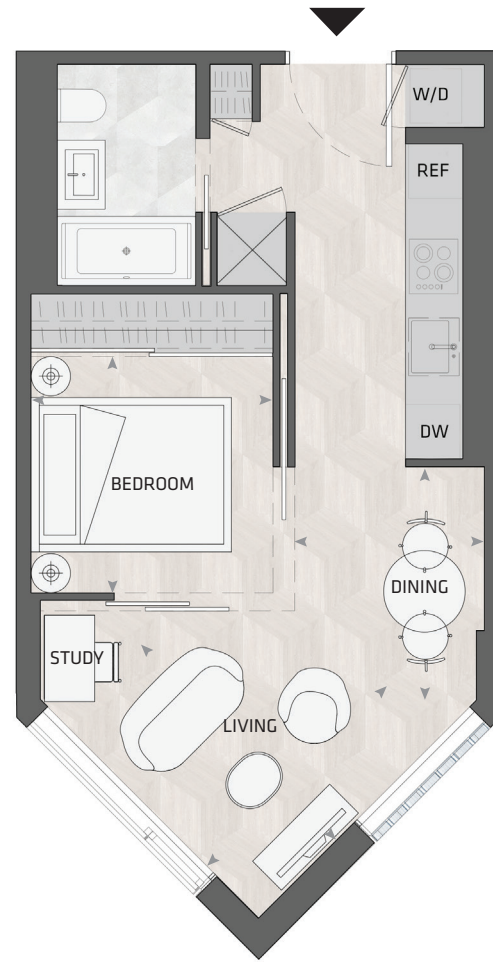
**EAST MOUNTAIN KEYPLAN**



All dimensions and specifications are approximate. Certain plans are reverse or mirror image. Balcony square footages are estimated and may vary from that stated. Please see Sales Representative for details. Furniture not included. Refer to key plan for unit location and orientation. E. & O.E.

# KING

## HOME 612 E



1BD.77

**1 Bedroom + Study**  
**1 Bathroom**

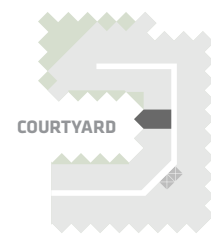
**Total Living:**  
**484 ft<sup>2</sup>**

Interior Living:  
484 ft<sup>2</sup>

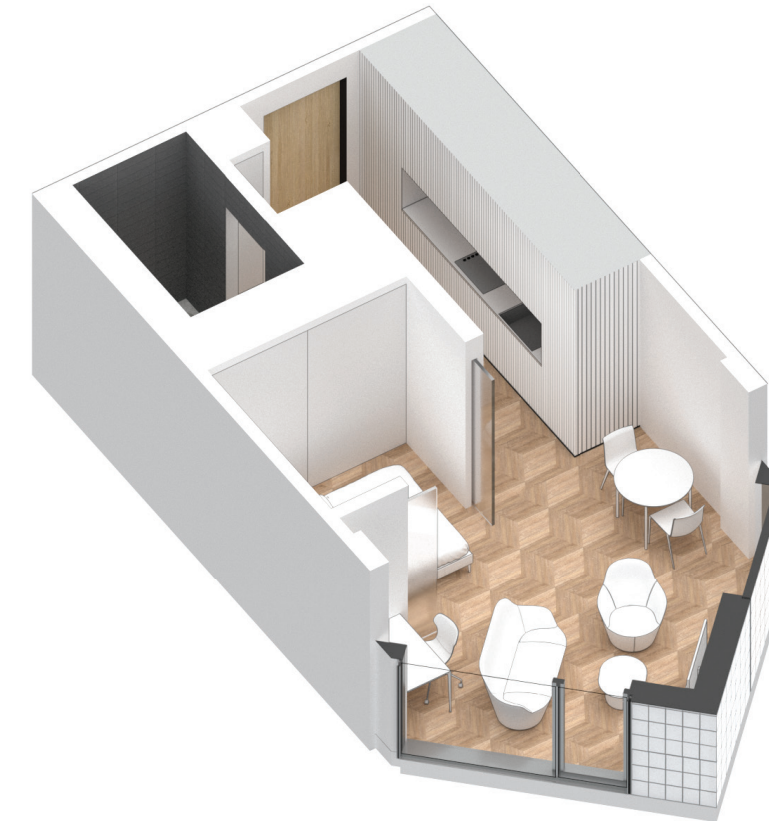
Exterior Living:  
N/A

<b>LIVING</b>	8' 8" X 9' 5"
<b>DINING</b>	6' 7" X 9' 3"
<b>BEDROOM</b>	8' 9" X 8' 6"

KING STREET WEST



**EAST MOUNTAIN KEYPLAN**



All dimensions and specifications are approximate. Certain plans are reverse or mirror image. Balcony square footages are estimated and may vary from that stated. Please see Sales Representative for details. Furniture not included. Refer to key plan for unit location and orientation. E. 6 O.E.

# KING

## HOME 625 E



1BD.04B

**1 Bedroom + Study  
1 Bathroom**

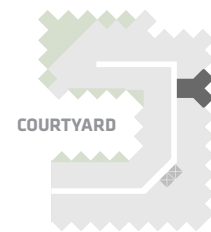
**Total Living:  
638 ft<sup>2</sup>**

Interior Living:  
566 ft<sup>2</sup>

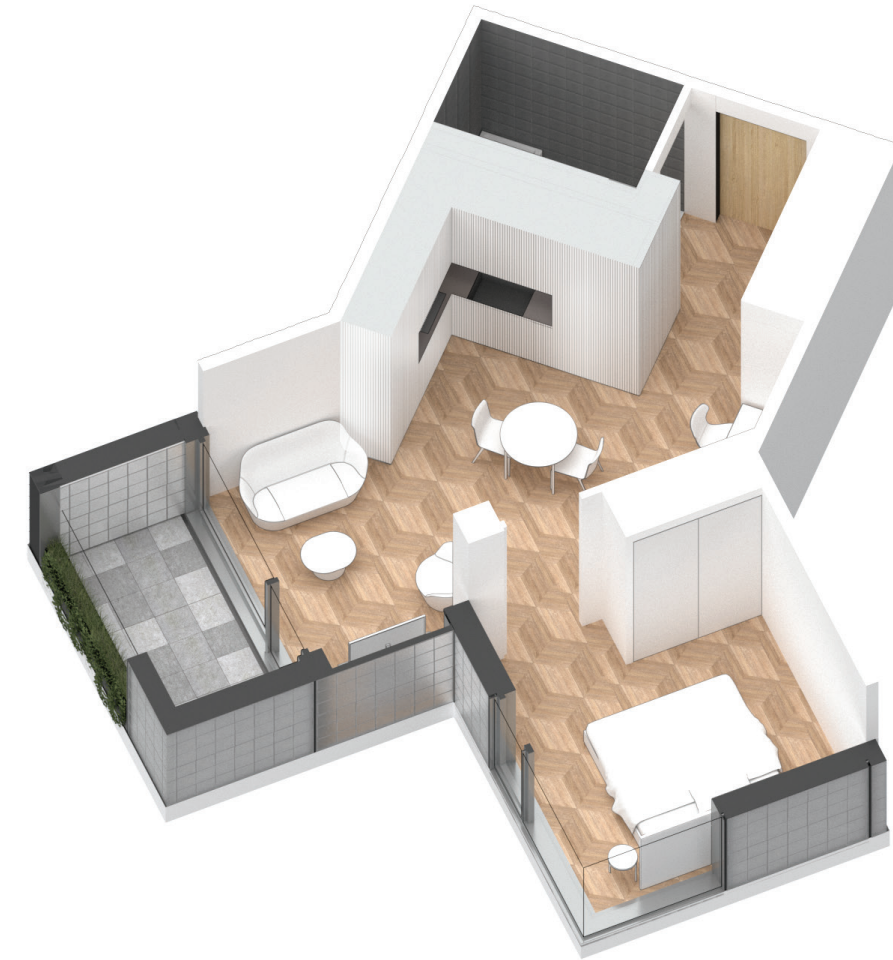
Exterior Living:  
72 ft<sup>2</sup>

<b>LIVING</b>	7' 11" X 11' 2"
<b>DINING</b>	14' 4" X 6' 7"
<b>BEDROOM</b>	11' 2" X 9' 10"
<b>BALCONY</b>	4' 11" X 11' 0"

KING STREET WEST



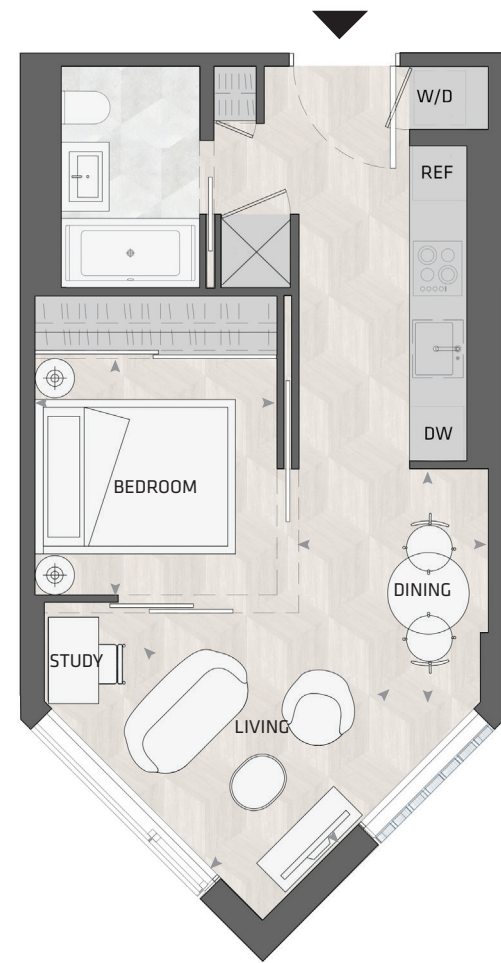
**EAST MOUNTAIN KEYPLAN**



All dimensions and specifications are approximate. Certain plans are reverse or mirror image. Balcony square footages are estimated and may vary from that stated. Please see Sales Representative for details. Furniture not included. Refer to key plan for unit location and orientation. E. & O.E.

# KING

## HOME 1508 E



1BD.77

**1 Bedroom + Study  
1 Bathroom**

**Total Living:  
484 ft<sup>2</sup>**

Interior Living:  
484 ft<sup>2</sup>

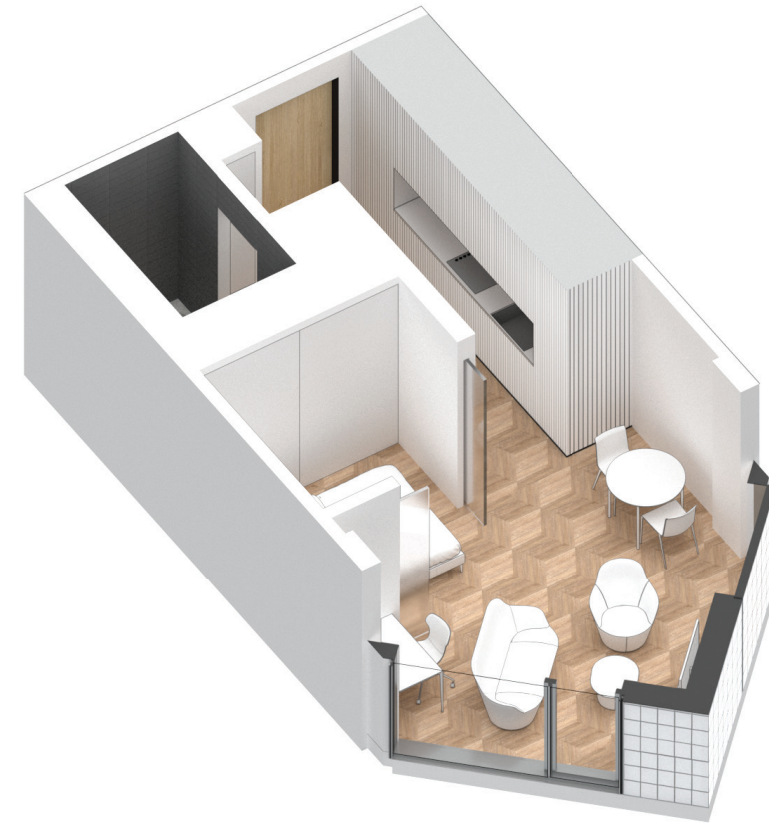
Exterior Living:  
N/A

<b>LIVING</b>	8' 8" X 9' 5"
<b>DINING</b>	6' 7" X 9' 3"
<b>BEDROOM</b>	8' 9" X 8' 6"

KING STREET WEST

COURTYARD

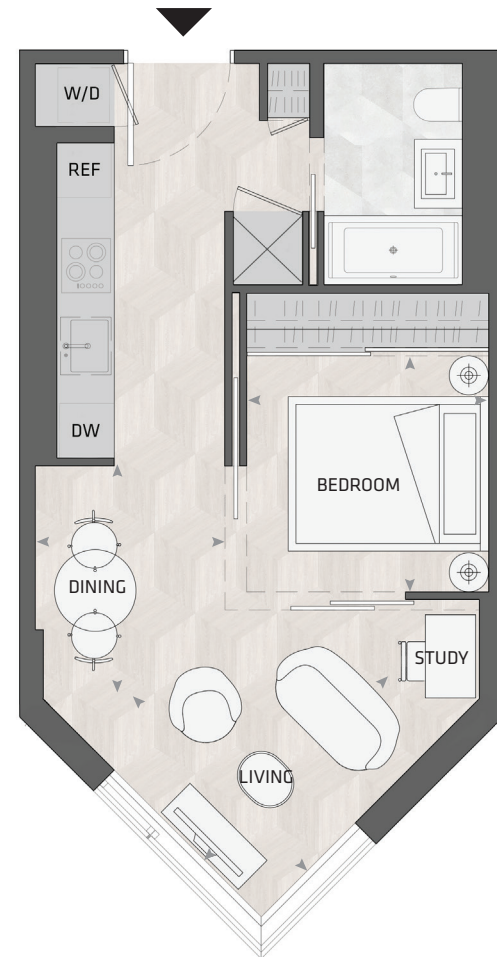
**EAST MOUNTAIN KEYPLAN**



All dimensions and specifications are approximate. Certain plans are reverse or mirror image. Balcony square footages are estimated and may vary from that stated. Please see Sales Representative for details. Furniture not included. Refer to key plan for unit location and orientation. E. & O.E.

# KING

## HOME 1507 E



1BD.77

**1 Bedroom + Study**  
**1 Bathroom**

**Total Living:**  
**484 ft<sup>2</sup>**

Interior Living:  
484 ft<sup>2</sup>

Exterior Living:  
N/A

**LIVING** 8' 8" X 9' 5"  
**DINING** 6' 7" X 9' 3"  
**BEDROOM** 8' 9" X 8' 6"

KING STREET WEST

COURTYARD

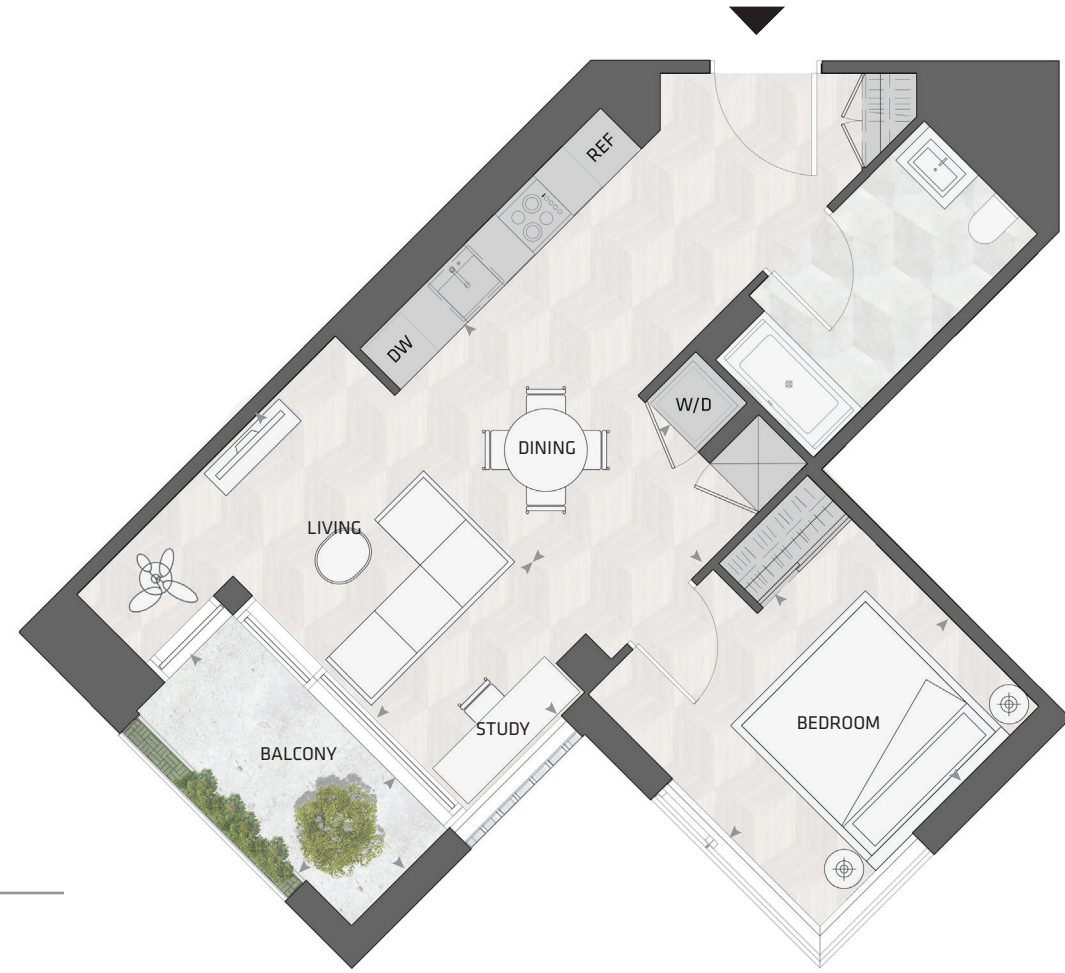
**EAST MOUNTAIN KEYPLAN**



All dimensions and specifications are approximate. Certain plans are reverse or mirror image. Balcony square footages are estimated and may vary from that stated. Please see Sales Representative for details. Furniture not included. Refer to key plan for unit location and orientation. E. & O.E.

# KING

## HOME 1215 E



1BD.11

**1 Bedroom + Study  
1 Bathroom**

**Total Living:  
755 ft<sup>2</sup>**

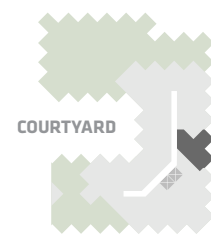
Interior Living:  
683 ft<sup>2</sup>

Exterior Living:  
72 ft<sup>2</sup>

<b>LIVING</b>	7' 7" X 15' 6"
<b>DINING</b>	7' 4" X 12' 3"
<b>BEDROOM</b>	11' 2" X 9' 7"
<b>BALCONY</b>	4' 11" X 11' 0"

KING STREET WEST

COURTYARD



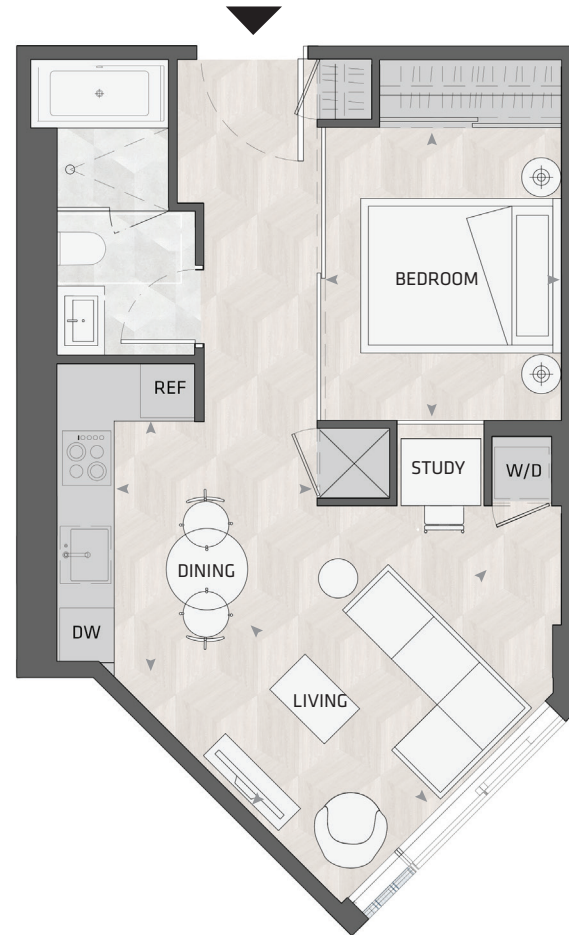
**EAST MOUNTAIN KEYPLAN**



All dimensions and specifications are approximate. Certain plans are reverse or mirror image. Balcony square footages are estimated and may vary from that stated. Please see Sales Representative for details. Furniture not included. Refer to key plan for unit location and orientation. E. & O.E.

# KING

## HOME 1112 E



1BD.85

**1 Bedroom + Study  
1 Bathroom**

**Total Living:  
532 ft<sup>2</sup>**

Interior Living:  
532 ft<sup>2</sup>

Exterior Living:  
N/A

<b>LIVING</b>	11' 3" X 10' 10"
<b>DINING</b>	7' 4" X 9' 3"
<b>BEDROOM</b>	8' 6" X 10' 7"

KING STREET WEST

COURTYARD

**EAST MOUNTAIN KEYPLAN**

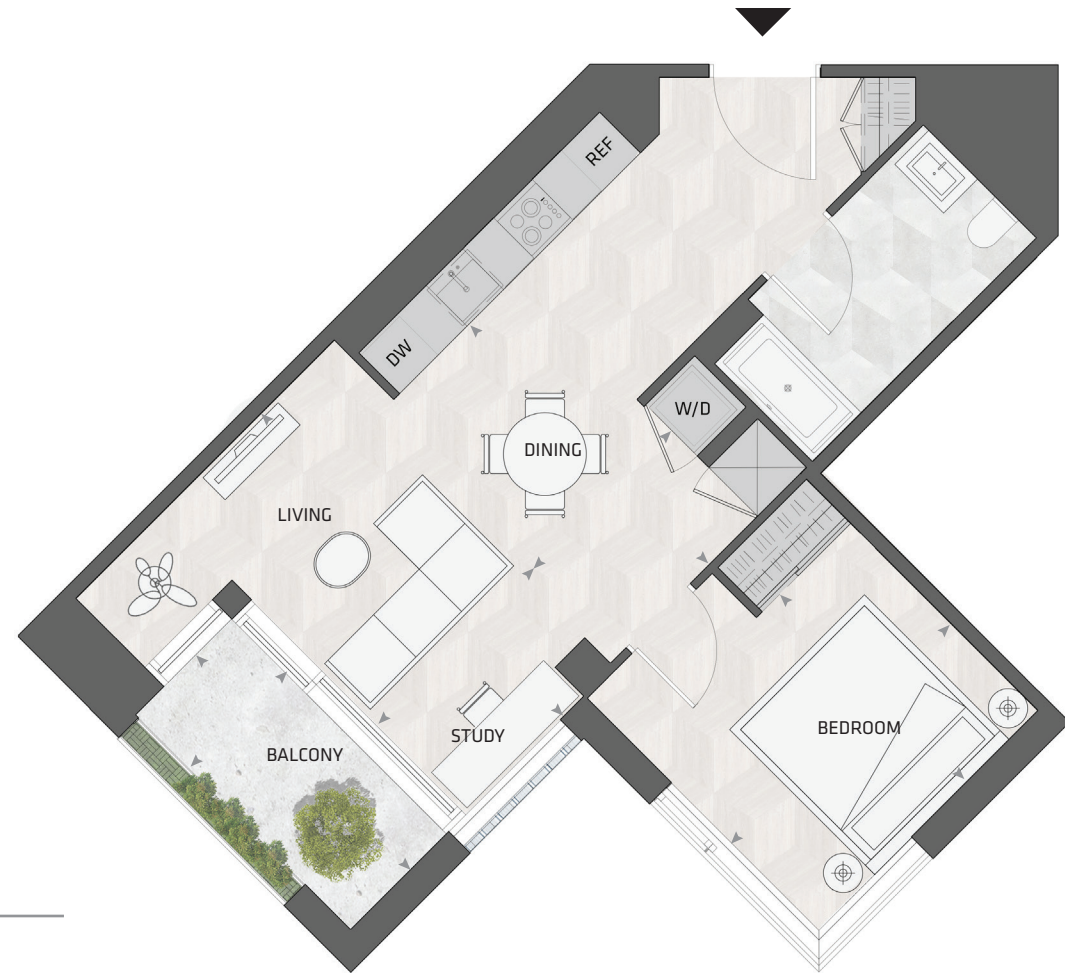


All dimensions and specifications are approximate. Certain plans are reverse or mirror image. Balcony square footages are estimated and may vary from that stated. Please see Sales Representative for details. Furniture not included. Refer to key plan for unit location and orientation. E. & O.E.



# KING

## HOME 1611 E



1BD.11

**1 Bedroom + Study  
1 Bathroom**

**Total Living:  
754 ft<sup>2</sup>**

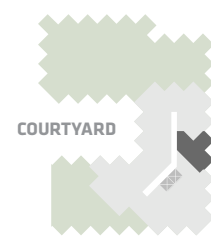
Interior Living:  
682 ft<sup>2</sup>

Exterior Living:  
72 ft<sup>2</sup>

<b>LIVING</b>	7' 7" X 15' 6"
<b>DINING</b>	7' 4" X 12' 3"
<b>BEDROOM</b>	11' 2" X 9' 7"
<b>ATELIER</b>	4' 11" X 5' 2"
<b>BALCONY</b>	4' 11" X 11' 0"

KING STREET WEST

COURTYARD



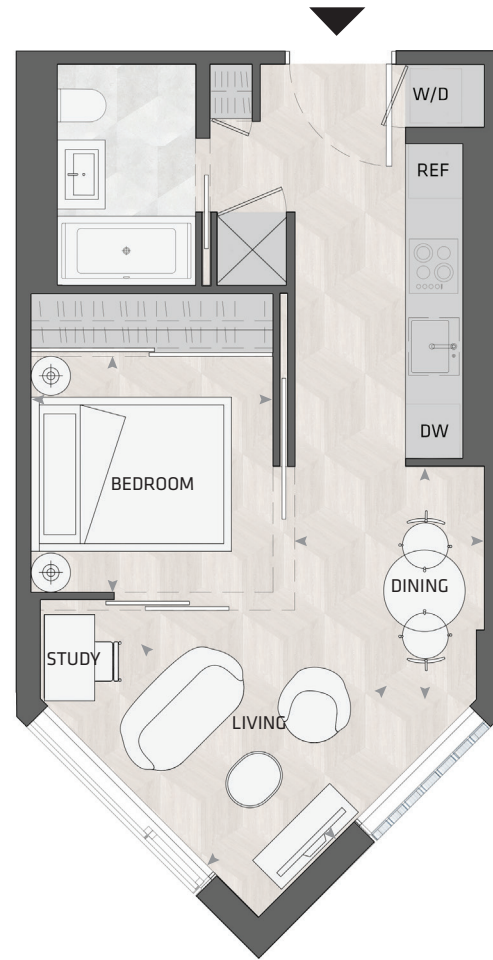
**EAST MOUNTAIN KEYPLAN**



All dimensions and specifications are approximate. Certain plans are reverse or mirror image. Balcony square footages are estimated and may vary from that stated. Please see Sales Representative for details. Furniture not included. Refer to key plan for unit location and orientation. E. & O.E.

# KING

## HOME 1608 E



1BD.77

**1 Bedroom + Study  
1 Bathroom**

**Total Living:  
484 ft<sup>2</sup>**

Interior Living:  
484 ft<sup>2</sup>

Exterior Living:  
N/A

<b>LIVING</b>	8' 8" X 9' 5"
<b>DINING</b>	6' 7" X 9' 3"
<b>BEDROOM</b>	8' 9" X 8' 6"

KING STREET WEST

COURTYARD

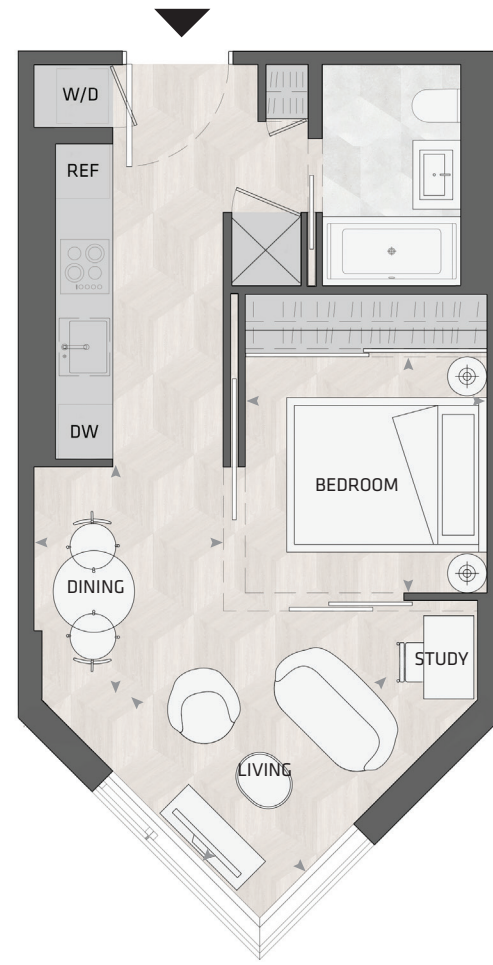
**EAST MOUNTAIN KEYPLAN**



All dimensions and specifications are approximate. Certain plans are reverse or mirror image. Balcony square footages are estimated and may vary from that stated. Please see Sales Representative for details. Furniture not included. Refer to key plan for unit location and orientation. E. & O.E.

# KING

## HOME 1607 E



1BD.77

**1 Bedroom + Study  
1 Bathroom**

**Total Living:  
484 ft<sup>2</sup>**

Interior Living:  
484 ft<sup>2</sup>

Exterior Living:  
N/A

**LIVING** 8' 8" X 9' 5"  
**DINING** 6' 7" X 9' 3"  
**BEDROOM** 8' 9" X 8' 6"

KING STREET WEST

COURTYARD

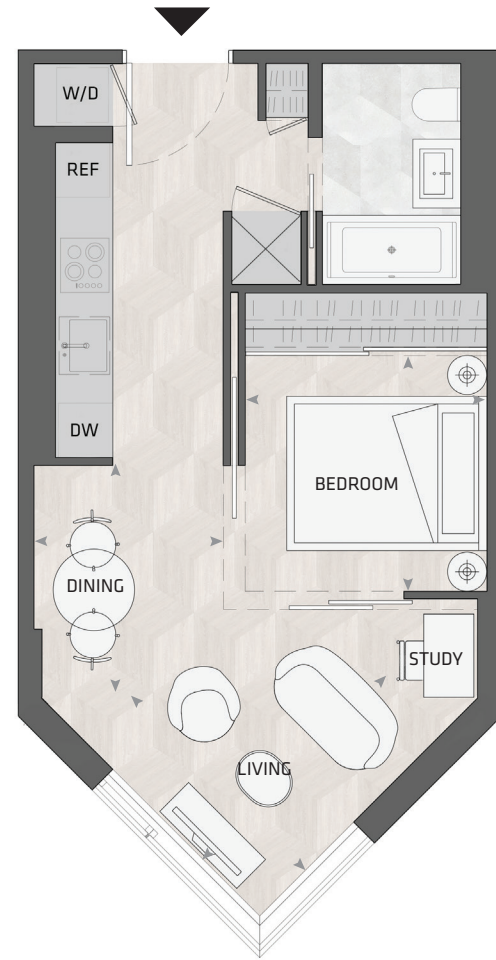
**EAST MOUNTAIN KEYPLAN**



All dimensions and specifications are approximate. Certain plans are reverse or mirror image. Balcony square footages are estimated and may vary from that stated. Please see Sales Representative for details. Furniture not included. Refer to key plan for unit location and orientation. E. & O.E.

# KING

## HOME 1208 E



1BD.77

**1 Bedroom + Study  
1 Bathroom**

**Total Living:  
484 ft<sup>2</sup>**

Interior Living:  
484 ft<sup>2</sup>

Exterior Living:  
N/A

<b>LIVING</b>	8' 8" X 9' 5"
<b>DINING</b>	6' 7" X 9' 3"
<b>BEDROOM</b>	8' 9" X 8' 6"

KING STREET WEST

COURTYARD

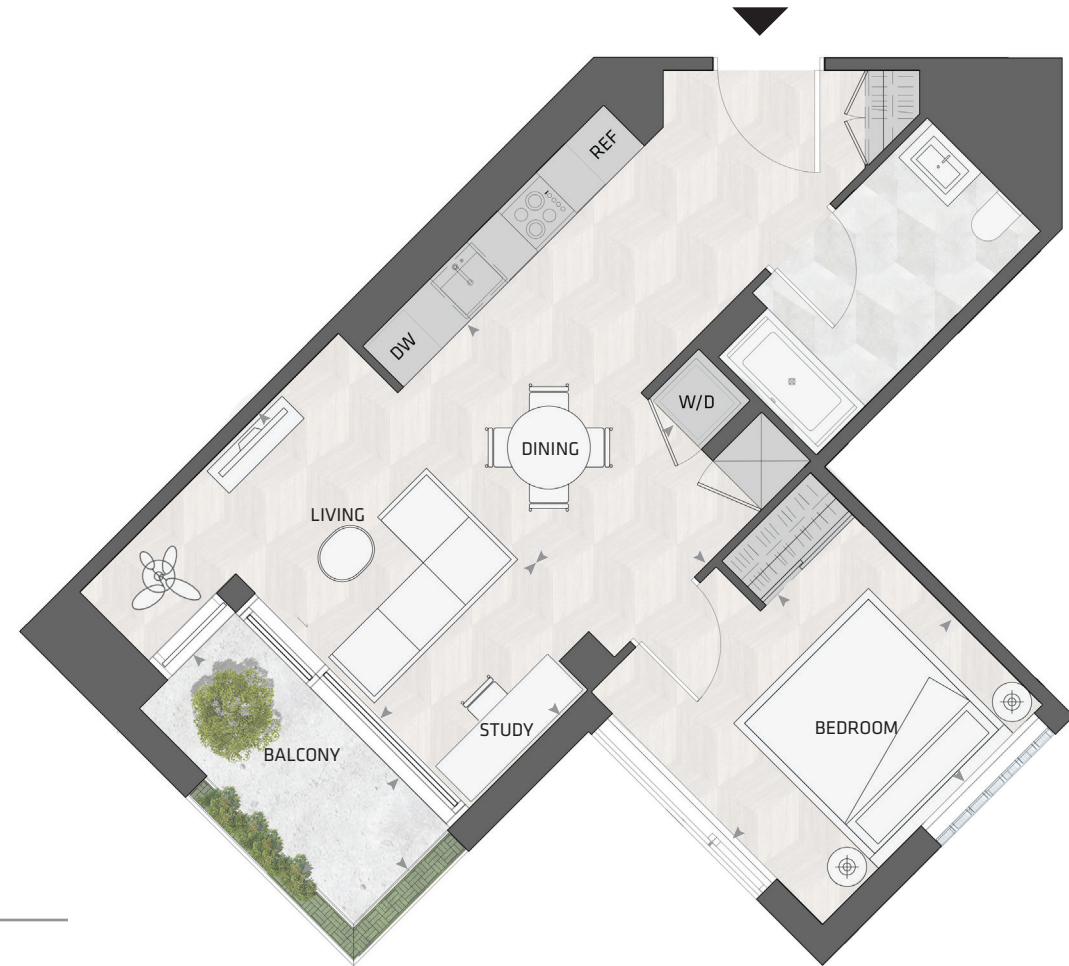
**EAST MOUNTAIN KEYPLAN**



All dimensions and specifications are approximate. Certain plans are reverse or mirror image. Balcony square footages are estimated and may vary from that stated. Please see Sales Representative for details. Furniture not included. Refer to key plan for unit location and orientation. E. & O.E.

# KING

## HOME 1120 E



1BD.11

**1 Bedroom + Study  
1 Bathroom**

**Total Living:  
755 ft<sup>2</sup>**

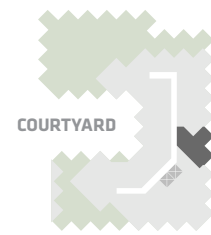
Interior Living:  
683 ft<sup>2</sup>

Exterior Living:  
72 ft<sup>2</sup>

<b>LIVING</b>	7' 7" X 15' 6"
<b>DINING</b>	7' 4" X 12' 3"
<b>BEDROOM</b>	11' 2" X 9' 7"
<b>ATELIER</b>	4' 11" X 5' 2"
<b>BALCONY</b>	4' 11" X 11' 0"

KING STREET WEST

COURTYARD



**EAST MOUNTAIN KEYPLAN**



All dimensions and specifications are approximate. Certain plans are reverse or mirror image. Balcony square footages are estimated and may vary from that stated. Please see Sales Representative for details. Furniture not included. Refer to key plan for unit location and orientation. E. & O.E.

# KING

## HOME 1118 E



1BD.04B

**1 Bedroom + Study  
1 Bathroom**

**Total Living:  
636 ft<sup>2</sup>**

Interior Living:  
565 ft<sup>2</sup>

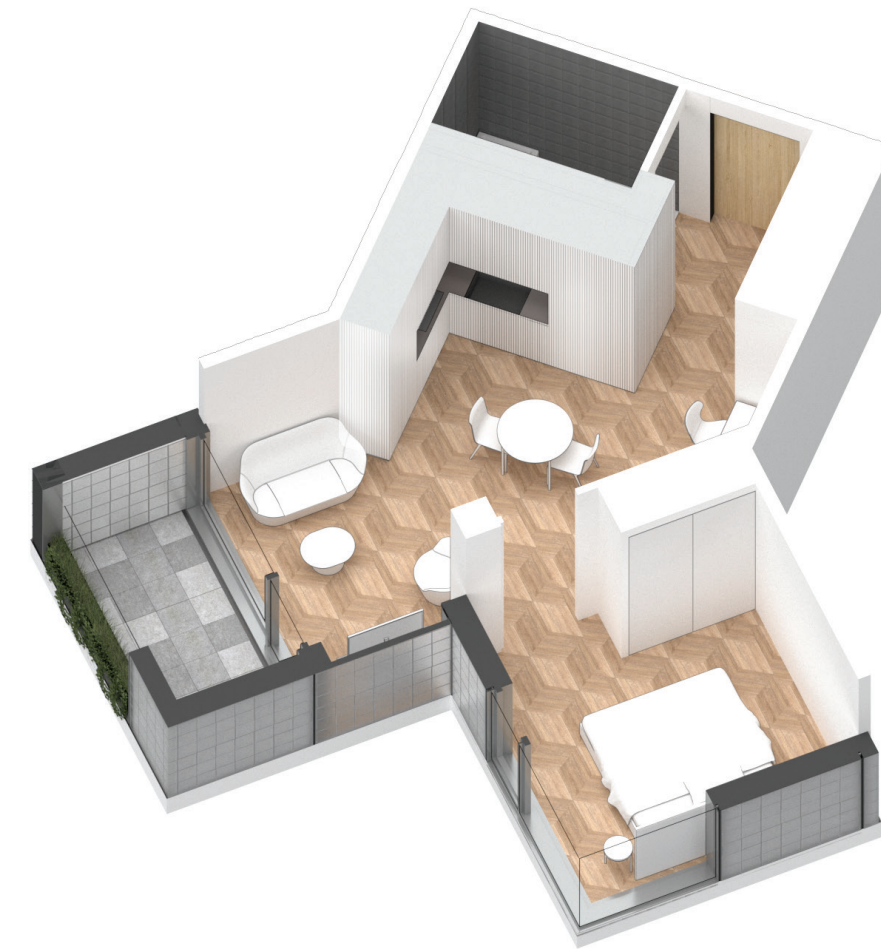
Exterior Living:  
72 ft<sup>2</sup>

<b>LIVING</b>	7' 11" X 11' 2"
<b>DINING</b>	14' 4" X 6' 7"
<b>BEDROOM</b>	11' 2" X 9' 10"
<b>BALCONY</b>	4' 11" X 11' 0"

KING STREET WEST

COURTYARD

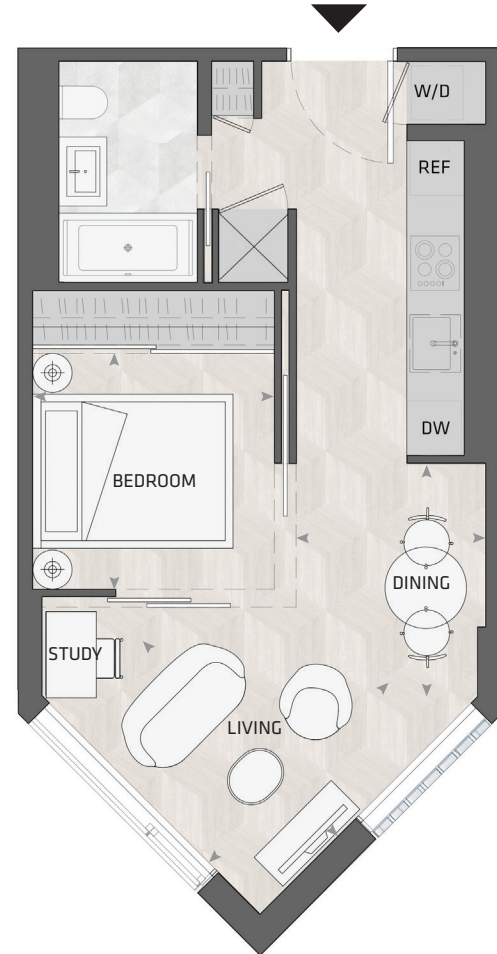
**EAST MOUNTAIN KEYPLAN**



All dimensions and specifications are approximate. Certain plans are reverse or mirror image. Balcony square footages are estimated and may vary from that stated. Please see Sales Representative for details. Furniture not included. Refer to key plan for unit location and orientation. E. & O.E.

# KING

## HOME 1111 E



1BD.77

**1 Bedroom + Study**  
**1 Bathroom**

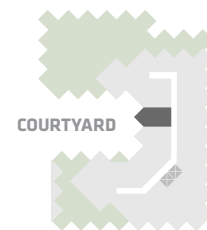
**Total Living:**  
**484 ft<sup>2</sup>**

Interior Living:  
484 ft<sup>2</sup>

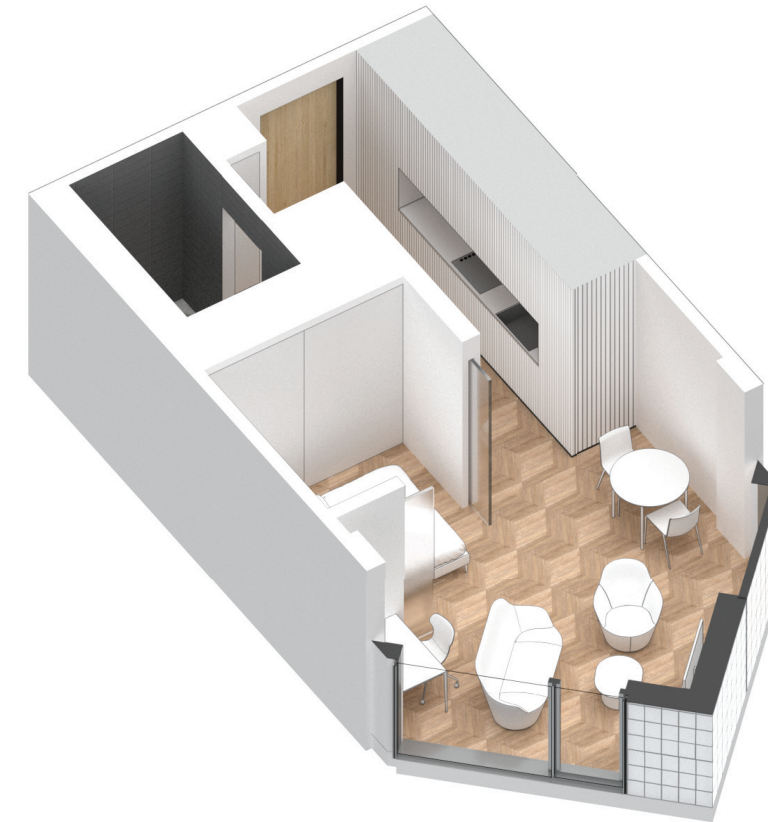
Exterior Living:  
N/A

<b>LIVING</b>	8' 8" X 9' 5"
<b>DINING</b>	6' 7" X 9' 3"
<b>BEDROOM</b>	8' 9" X 8' 6"

KING STREET WEST



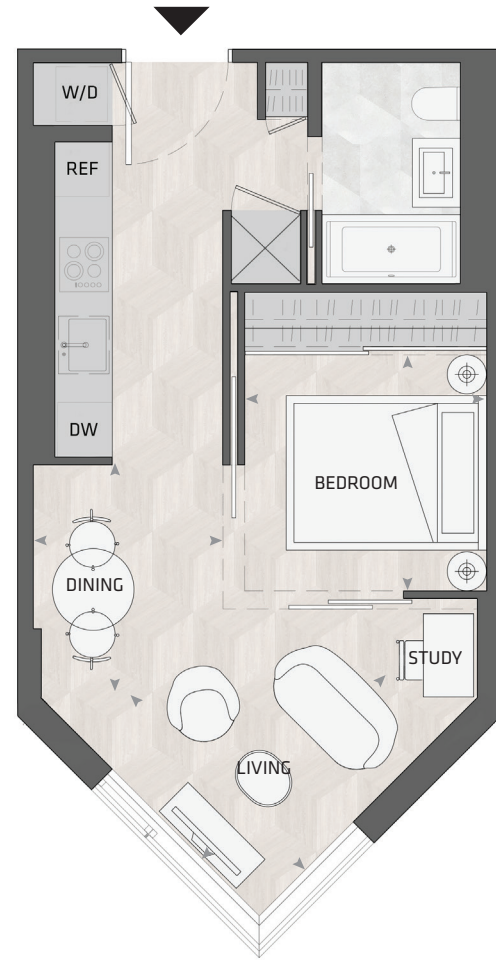
**EAST MOUNTAIN KEYPLAN**



All dimensions and specifications are approximate. Certain plans are reverse or mirror image. Balcony square footages are estimated and may vary from that stated. Please see Sales Representative for details. Furniture not included. Refer to key plan for unit location and orientation. E. & O.E.

# KING

## HOME 1110 E



1BD.77

**1 Bedroom + Study  
1 Bathroom**

**Total Living:  
484 ft<sup>2</sup>**

Interior Living:  
484 ft<sup>2</sup>

Exterior Living:  
N/A

<b>LIVING</b>	8' 8" X 9' 5"
<b>DINING</b>	6' 7" X 9' 3"
<b>BEDROOM</b>	8' 9" X 8' 6"

KING STREET WEST

COURTYARD

**EAST MOUNTAIN KEYPLAN**

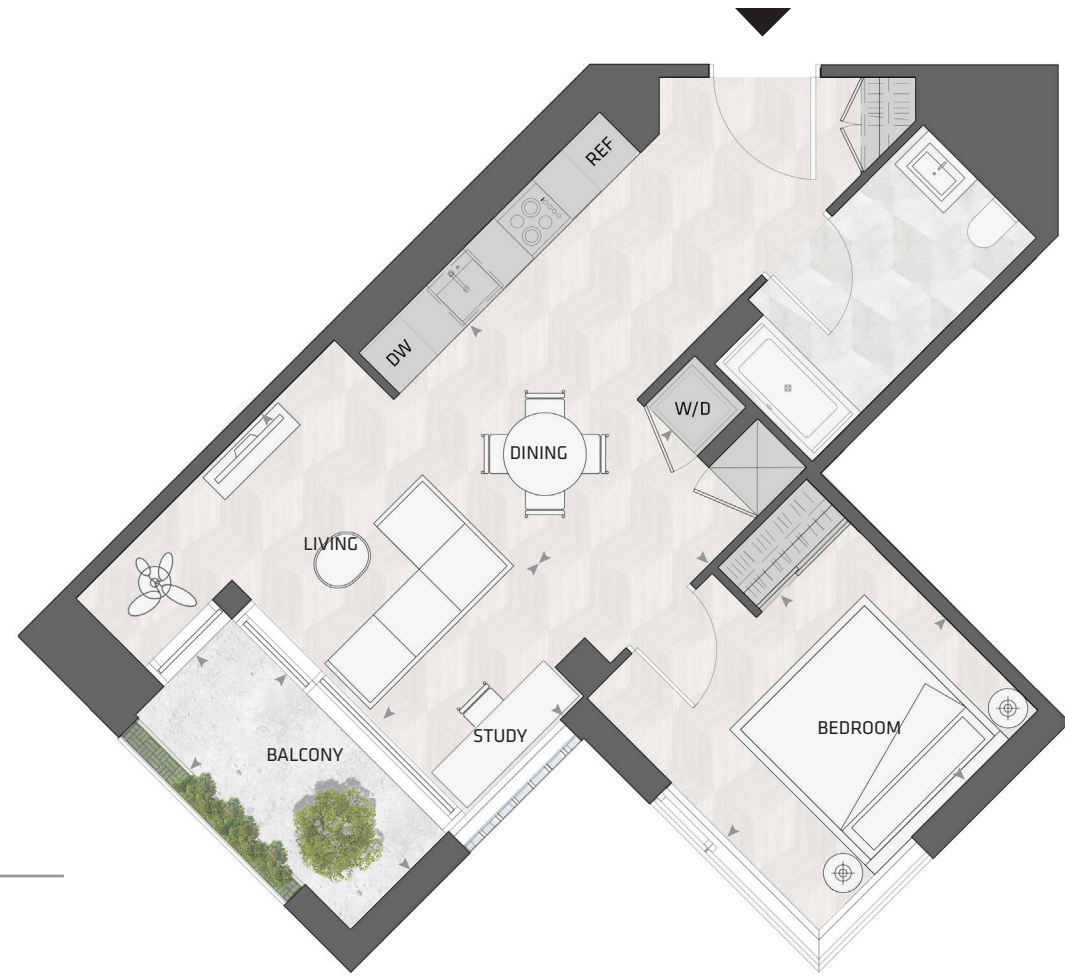


All dimensions and specifications are approximate. Certain plans are reverse or mirror image. Balcony square footages are estimated and may vary from that stated. Please see Sales Representative for details. Furniture not included. Refer to key plan for unit location and orientation. E. & O.E.



# KING

## HOME 1021 E



1BD.11

**1 Bedroom + Study  
1 Bathroom**

**Total Living:  
757 ft<sup>2</sup>**

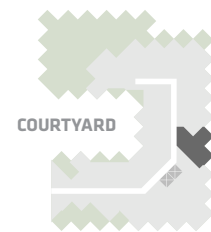
Interior Living:  
683 ft<sup>2</sup>

Exterior Living:  
74 ft<sup>2</sup>

<b>LIVING</b>	7' 7" X 15' 6"
<b>DINING</b>	7' 4" X 12' 3"
<b>BEDROOM</b>	11' 2" X 9' 7"
<b>ATELIER</b>	4' 11" X 5' 2"
<b>BALCONY</b>	4' 11" X 11' 0"

KING STREET WEST

COURTYARD



**EAST MOUNTAIN KEYPLAN**



All dimensions and specifications are approximate. Certain plans are reverse or mirror image. Balcony square footages are estimated and may vary from that stated. Please see Sales Representative for details. Furniture not included. Refer to key plan for unit location and orientation. E. & O.E.

# KING

## HOME 1012 E



1BD.85

**1 Bedroom + Study  
1 Bathroom**

**Total Living:  
542 ft<sup>2</sup>**

Interior Living:  
542 ft<sup>2</sup>

Exterior Living:  
N/A ft<sup>2</sup>

<b>LIVING</b>	11' 3" X 11' 7"
<b>DINING</b>	7' 4" X 9' 3"
<b>BEDROOM</b>	10' 7" X 8' 7"



KING STREET WEST

COURTYARD

**EAST MOUNTAIN KEYPLAN**



All dimensions and specifications are approximate. Certain plans are reverse or mirror image. Balcony square footages are estimated and may vary from that stated. Please see Sales Representative for details. Furniture not included. Refer to key plan for unit location and orientation. E. & O.E.

# KING

## HOME 1019 E



1BD.04

**1 Bedroom + Study  
1 Bathroom**

**Total Living:  
636 ft<sup>2</sup>**

Interior Living:  
565 ft<sup>2</sup>

Exterior Living:  
72 ft<sup>2</sup>

<b>LIVING</b>	7' 11" X 11' 2"
<b>DINING</b>	14' 4" X 6' 7"
<b>BEDROOM</b>	11' 2" X 9' 10"
<b>BALCONY</b>	4' 11" X 11' 0"

KING STREET WEST

COURTYARD

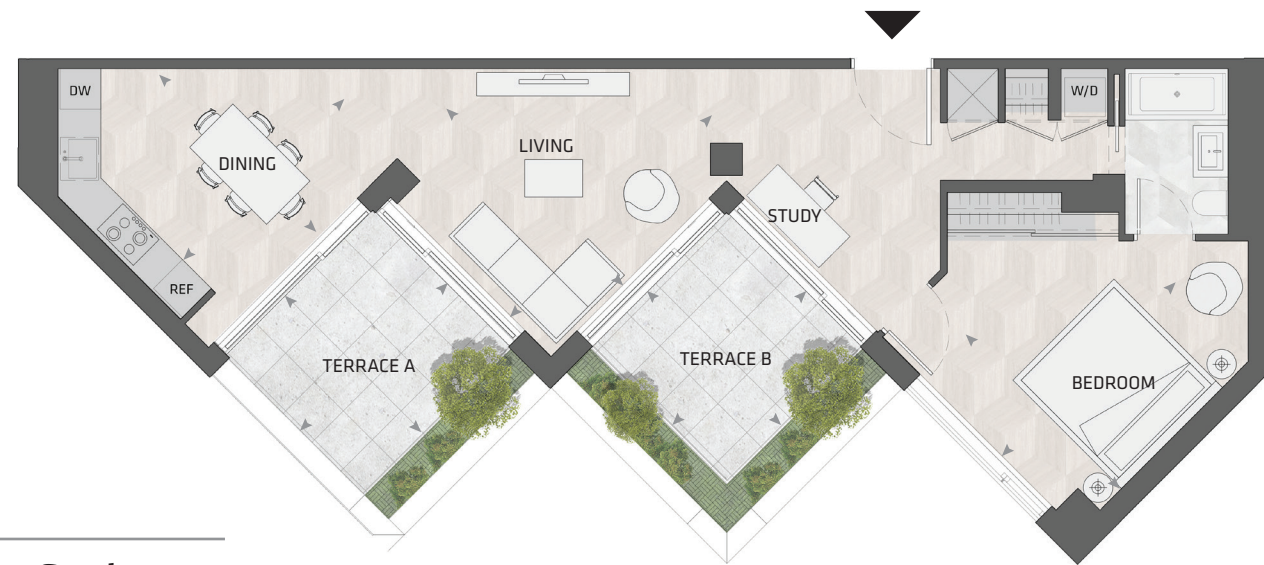
**EAST MOUNTAIN KEYPLAN**



All dimensions and specifications are approximate. Certain plans are reverse or mirror image. Balcony square footages are estimated and may vary from that stated. Please see Sales Representative for details. Furniture not included. Refer to key plan for unit location and orientation. E. & O.E.

# KING

## HOME 1005 E



1BD.75

**1 Bedroom + Study  
1 Bathroom**

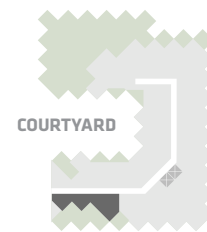
**Total Living:  
1076 ft<sup>2</sup>**

Interior Living:  
812 ft<sup>2</sup>

Exterior Living:  
263 ft<sup>2</sup>

<b>LIVING</b>	12' 8" X 12' 0"
<b>DINING</b>	10' 9" X 9' 6"
<b>BEDROOM</b>	11' 8" X 10' 11"
<b>TERRACE A</b>	10' 0" X 9' 1"
<b>TERRACE B</b>	9' 1" X 9' 1"

KING STREET WEST



COURTYARD

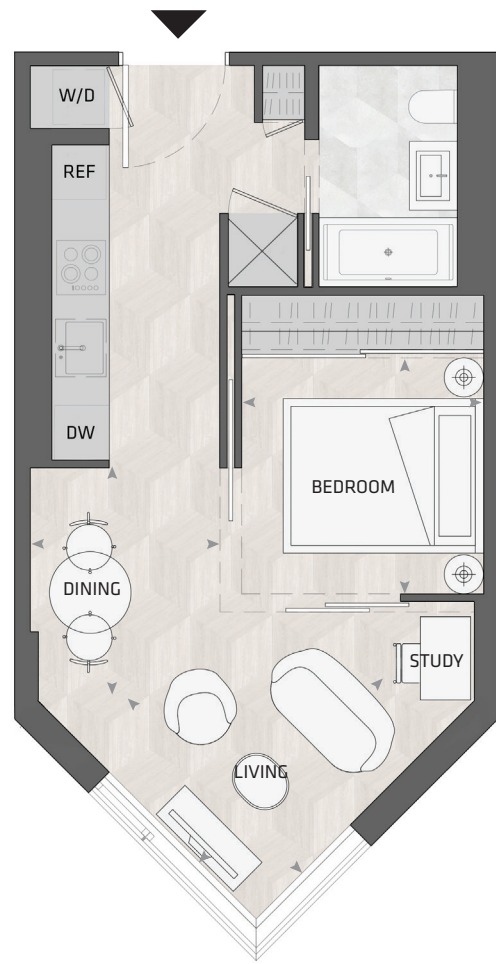
**EAST MOUNTAIN KEYPLAN**



All dimensions and specifications are approximate. Certain plans are reverse or mirror image. Balcony square footages are estimated and may vary from that stated. Please see Sales Representative for details. Furniture not included. Refer to key plan for unit location and orientation. E. & O.E.

# KING

## HOME 1010 E



1BD.77

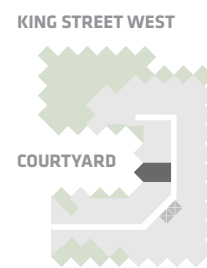
**1 Bedroom + Study  
1 Bathroom**

**Total Living:  
484 ft<sup>2</sup>**

Interior Living:  
484 ft<sup>2</sup>

Exterior Living:  
N/A

**LIVING** 8' 8" X 9' 5"  
**DINING** 6' 7" X 9' 3"  
**BEDROOM** 8' 9" X 8' 6"



**EAST MOUNTAIN KEYPLAN**



All dimensions and specifications are approximate. Certain plans are reverse or mirror image. Balcony square footages are estimated and may vary from that stated. Please see Sales Representative for details. Furniture not included. Refer to key plan for unit location and orientation. E. & O.E.

# KING

## HOME 1011 E



1BD.77

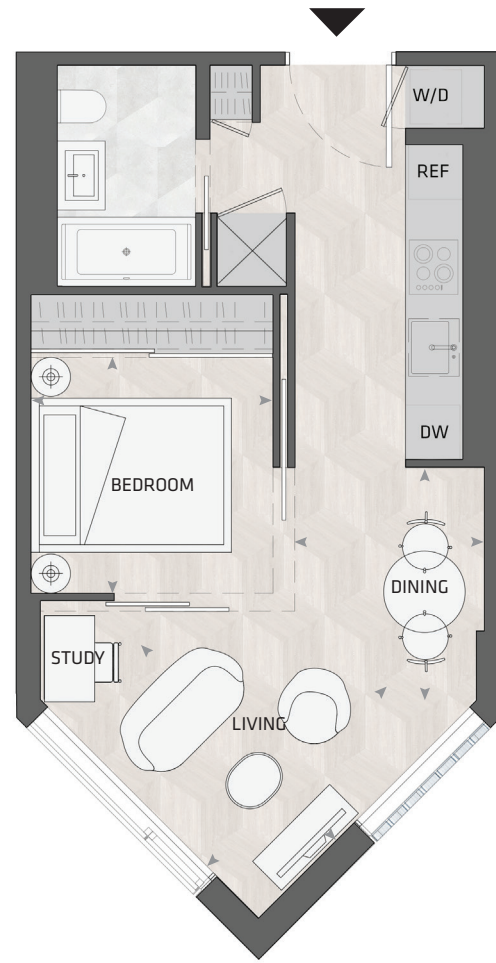
**1 Bedroom + Study**  
**1 Bathroom**

**Total Living:**  
**484 ft<sup>2</sup>**

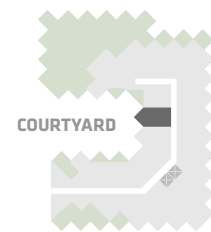
Interior Living:  
484 ft<sup>2</sup>

Exterior Living:  
N/A

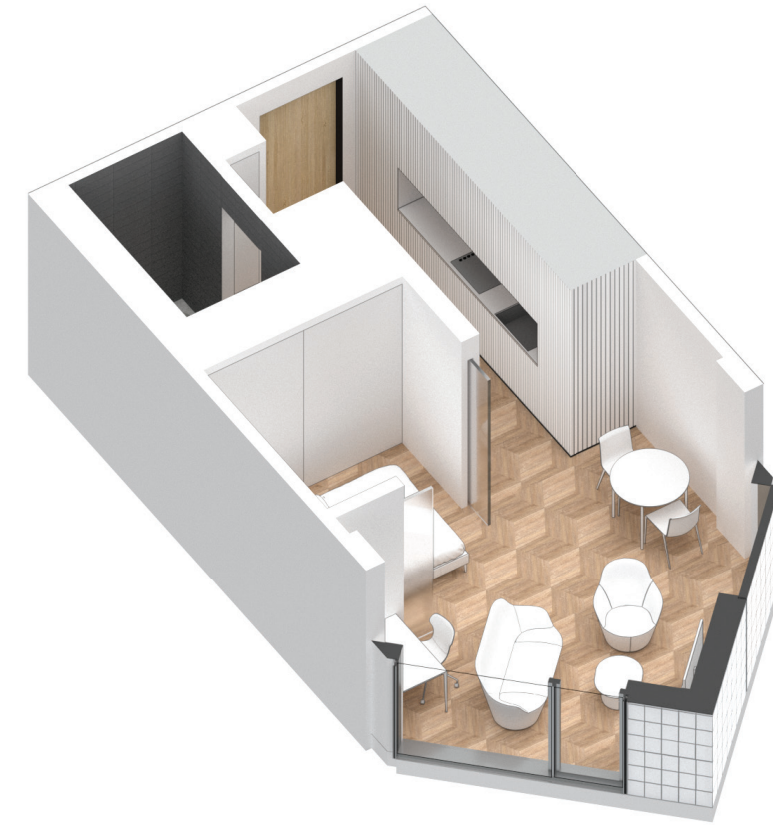
<b>LIVING</b>	8' 8" X 9' 5"
<b>DINING</b>	6' 7" X 9' 3"
<b>BEDROOM</b>	8' 9" X 8' 6"



KING STREET WEST



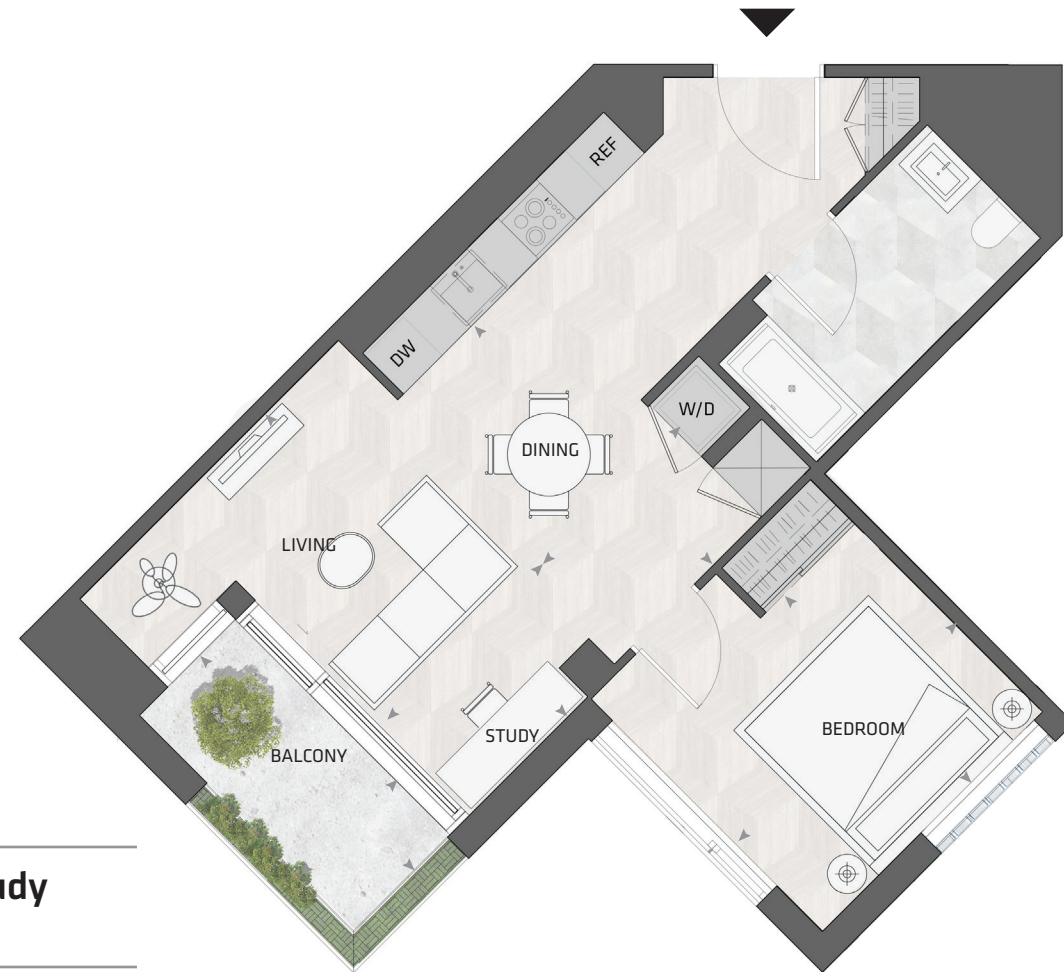
**EAST MOUNTAIN KEYPLAN**



All dimensions and specifications are approximate. Certain plans are reverse or mirror image. Balcony square footages are estimated and may vary from that stated. Please see Sales Representative for details. Furniture not included. Refer to key plan for unit location and orientation. E. & O.E.

# KING

## HOME 922 E



1BD.11

**1 Bedroom + Study  
1 Bathroom**

**Total Living:  
755 ft<sup>2</sup>**

Interior Living:  
683 ft<sup>2</sup>

Exterior Living:  
72 ft<sup>2</sup>

<b>LIVING</b>	7' 7" X 15' 6"
<b>DINING</b>	7' 4" X 12' 3"
<b>BEDROOM</b>	11' 2" X 9' 7"
<b>ATELIER</b>	4' 11" X 5' 2"
<b>BALCONY</b>	4' 11" X 11' 0"

KING STREET WEST

COURTYARD

**EAST MOUNTAIN KEYPLAN**



All dimensions and specifications are approximate. Certain plans are reverse or mirror image. Balcony square footages are estimated and may vary from that stated. Please see Sales Representative for details. Furniture not included. Refer to key plan for unit location and orientation. E. & O.E.

# KING

## HOME 918 E



1BD.08

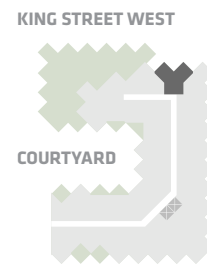
**1 Bedroom + Study  
1 Bathroom**

**Total Living:  
568 ft<sup>2</sup>**

Interior Living:  
568 ft<sup>2</sup>

Exterior Living:  
N/A

<b>LIVING</b>	11' 2" X 12' 0"
<b>DINING</b>	10' 10" X 7' 8"
<b>BEDROOM</b>	9' 3" X 11' 2"



**EAST MOUNTAIN KEYPLAN**

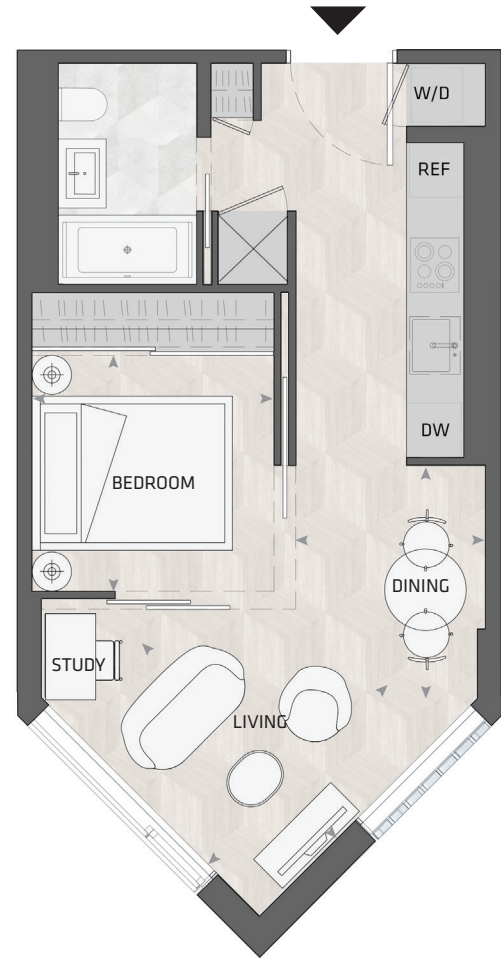


All dimensions and specifications are approximate. Certain plans are reverse or mirror image. Balcony square footages are estimated and may vary from that stated. Please see Sales Representative for details. Furniture not included. Refer to key plan for unit location and orientation. E. & O.E.



# KING

## HOME 911 E



1BD.77

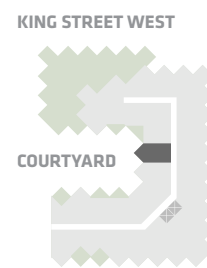
**1 Bedroom + Study**  
**1 Bathroom**

**Total Living:**  
**484 ft<sup>2</sup>**

Interior Living:  
484 ft<sup>2</sup>

Exterior Living:  
N/A

<b>LIVING</b>	8' 8" X 9' 5"
<b>DINING</b>	6' 7" X 9' 3"
<b>BEDROOM</b>	8' 9" X 8' 6"



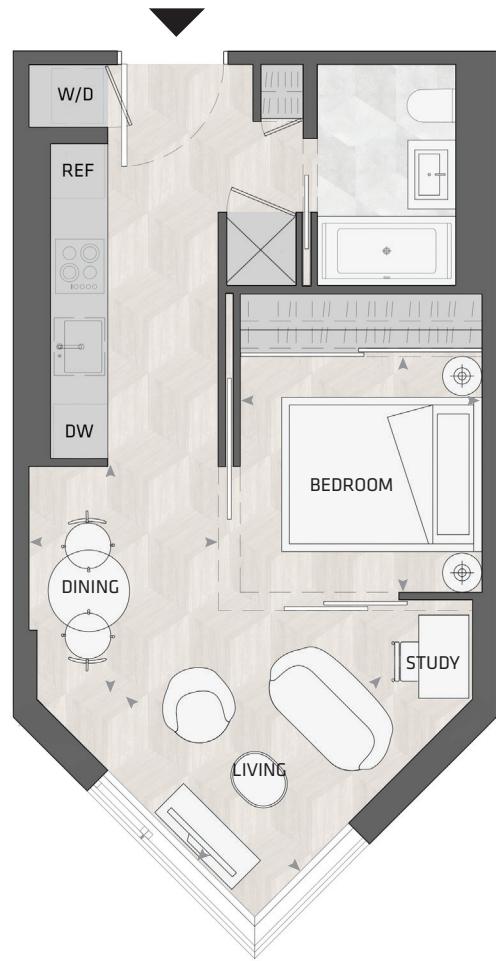
**EAST MOUNTAIN KEYPLAN**



All dimensions and specifications are approximate. Certain plans are reverse or mirror image. Balcony square footages are estimated and may vary from that stated. Please see Sales Representative for details. Furniture not included. Refer to key plan for unit location and orientation. E. & O.E.

# KING

## HOME 910 E



1BD.77

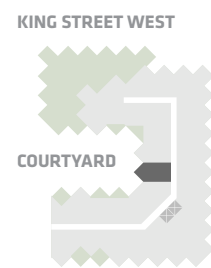
**1 Bedroom + Study**  
**1 Bathroom**

**Total Living:**  
**484 ft<sup>2</sup>**

Interior Living:  
484 ft<sup>2</sup>

Exterior Living:  
N/A

<b>LIVING</b>	8' 8" X 9' 5"
<b>DINING</b>	6' 7" X 9' 3"
<b>BEDROOM</b>	8' 9" X 8' 6"



**EAST MOUNTAIN KEYPLAN**



All dimensions and specifications are approximate. Certain plans are reverse or mirror image. Balcony square footages are estimated and may vary from that stated. Please see Sales Representative for details. Furniture not included. Refer to key plan for unit location and orientation. E. & O.E.

# KING

## HOME 821 E



1BD.04B

**1 Bedroom + Study  
1 Bathroom**

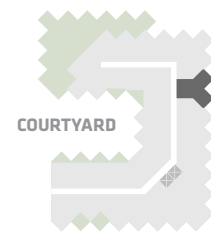
**Total Living:  
637 ft<sup>2</sup>**

Interior Living:  
565 ft<sup>2</sup>

Exterior Living:  
72 ft<sup>2</sup>

<b>LIVING</b>	7' 11" X 11' 2"
<b>DINING</b>	14' 4" X 6' 7"
<b>BEDROOM</b>	11' 2" X 9' 10"
<b>BALCONY</b>	4' 11" X 11' 0"

KING STREET WEST



**EAST MOUNTAIN KEYPLAN**



All dimensions and specifications are approximate. Certain plans are reverse or mirror image. Balcony square footages are estimated and may vary from that stated. Please see Sales Representative for details. Furniture not included. Refer to key plan for unit location and orientation. E. & O.E.

# KING

## HOME 906 E



1BD.13

**1 Bedroom + Study**  
**1 Bathroom**

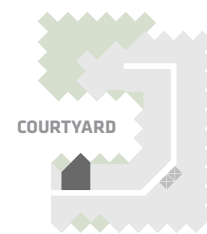
**Total Living:**  
**727 ft<sup>2</sup>**

Interior Living:  
656 ft<sup>2</sup>

Exterior Living:  
72 ft<sup>2</sup>

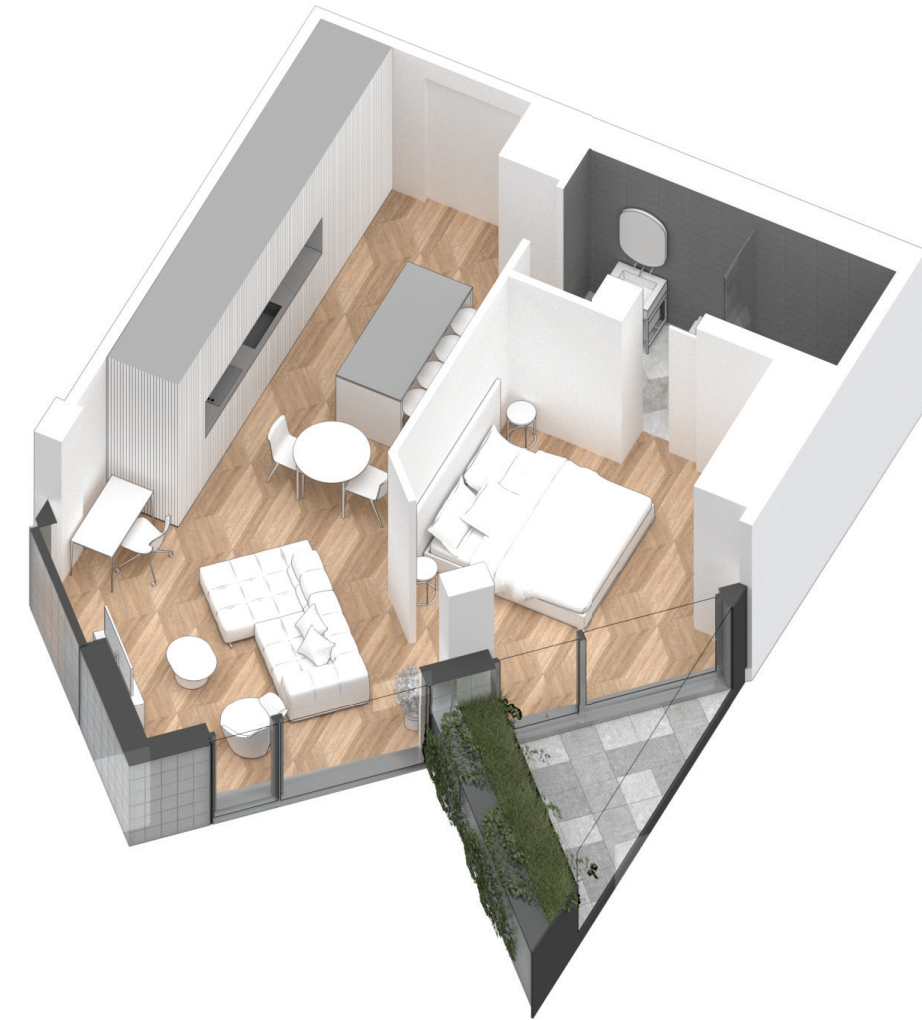
<b>LIVING</b>	12' 0" X 12' 9"
<b>DINING</b>	9' 0" X 6' 0"
<b>BEDROOM</b>	10' 9" X 10' 4"
<b>TERRACE</b>	6' 4" X 8' 6"

KING STREET WEST



COURTYARD

**EAST MOUNTAIN KEYPLAN**



All dimensions and specifications are approximate. Certain plans are reverse or mirror image. Balcony square footages are estimated and may vary from that stated. Please see Sales Representative for details. Furniture not included. Refer to key plan for unit location and orientation. E. & O.E.

# KING

## HOME 823 E



1BD.11

**1 Bedroom + Study  
1 Bathroom**

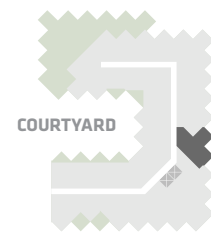
**Total Living:  
755 ft<sup>2</sup>**

Interior Living:  
683 ft<sup>2</sup>

Exterior Living:  
72 ft<sup>2</sup>

<b>LIVING</b>	7' 7" X 15' 6"
<b>DINING</b>	7' 4" X 12' 3"
<b>BEDROOM</b>	11' 2" X 9' 7"
<b>ATELIER</b>	4' 11" X 5' 2"
<b>BALCONY</b>	4' 11" X 11' 0"

KING STREET WEST



**EAST MOUNTAIN KEYPLAN**



All dimensions and specifications are approximate. Certain plans are reverse or mirror image. Balcony square footages are estimated and may vary from that stated. Please see Sales Representative for details. Furniture not included. Refer to key plan for unit location and orientation. E. & O.E.

# KING

## HOME 818 E



1BD.08

**1 Bedroom + Study  
1 Bathroom**

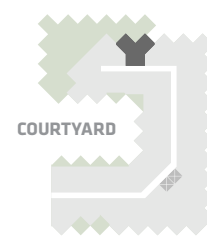
**Total Living:  
856 ft<sup>2</sup>**

Interior Living:  
569 ft<sup>2</sup>

Exterior Living:  
287 ft<sup>2</sup>

<b>LIVING</b>	11' 2" X 12' 0"
<b>DINING</b>	10' 10" X 7' 8"
<b>BEDROOM</b>	9' 3" X 11' 2"
<b>TERRACE A</b>	9' 1" X 9' 1"
<b>TERRACE B</b>	9' 1" X 6' 8"

KING STREET WEST



COURTYARD

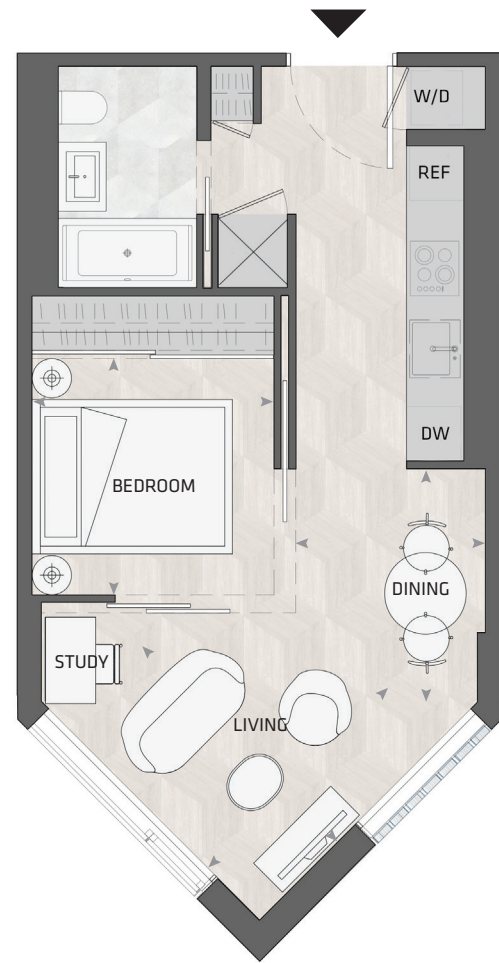
**EAST MOUNTAIN KEYPLAN**



All dimensions and specifications are approximate. Certain plans are reverse or mirror image. Balcony square footages are estimated and may vary from that stated. Please see Sales Representative for details. Furniture not included. Refer to key plan for unit location and orientation. E. & O.E.

# KING

## HOME 811 E



1BD.77

**1 Bedroom + Study**  
**1 Bathroom**

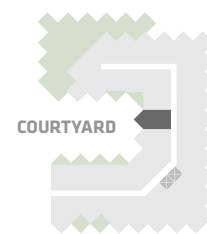
**Total Living:**  
**484 ft<sup>2</sup>**

Interior Living:  
484 ft<sup>2</sup>

Exterior Living:  
N/A

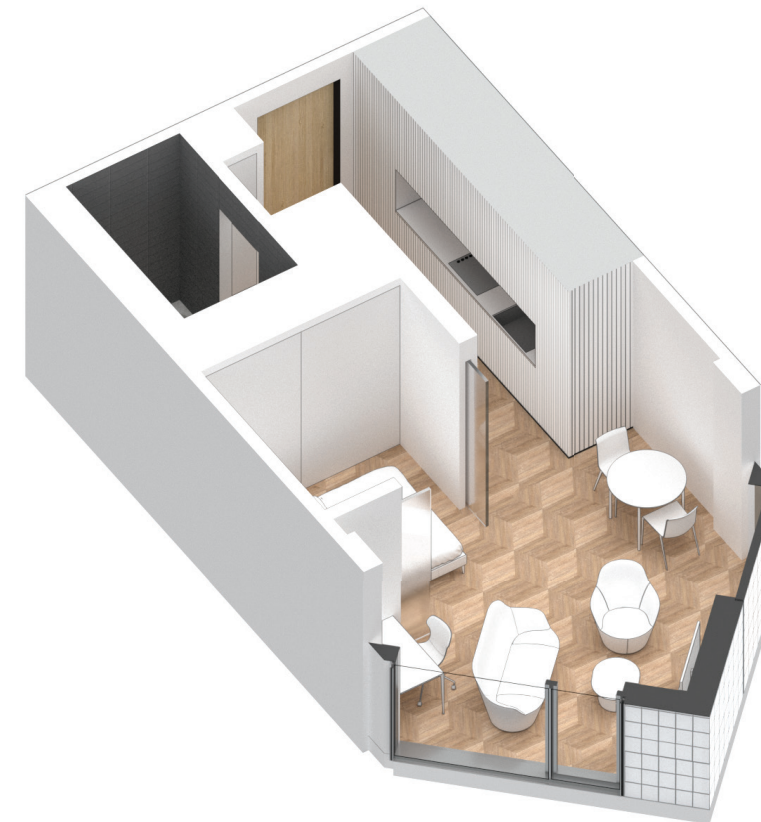
<b>LIVING</b>	8' 8" X 9' 5"
<b>DINING</b>	6' 7" X 9' 3"
<b>BEDROOM</b>	8' 9" X 8' 6"

KING STREET WEST



COURTYARD

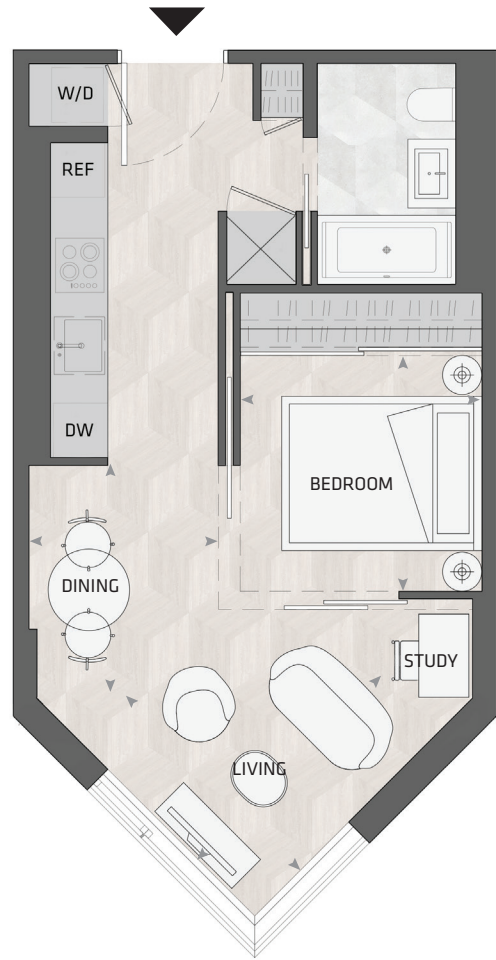
**EAST MOUNTAIN KEYPLAN**



All dimensions and specifications are approximate. Certain plans are reverse or mirror image. Balcony square footages are estimated and may vary from that stated. Please see Sales Representative for details. Furniture not included. Refer to key plan for unit location and orientation. E. & O.E.

# KING

## HOME 710 E



1BD.77

**1 Bedroom + Study**  
**1 Bathroom**

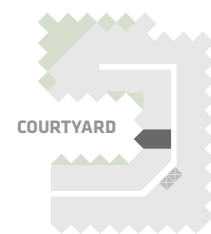
**Total Living:**  
**484 ft<sup>2</sup>**

Interior Living:  
484 ft<sup>2</sup>

Exterior Living:  
N/A

<b>LIVING</b>	8' 8" X 9' 5"
<b>DINING</b>	6' 7" X 9' 3"
<b>BEDROOM</b>	8' 9" X 8' 6"

KING STREET WEST



**EAST MOUNTAIN KEYPLAN**

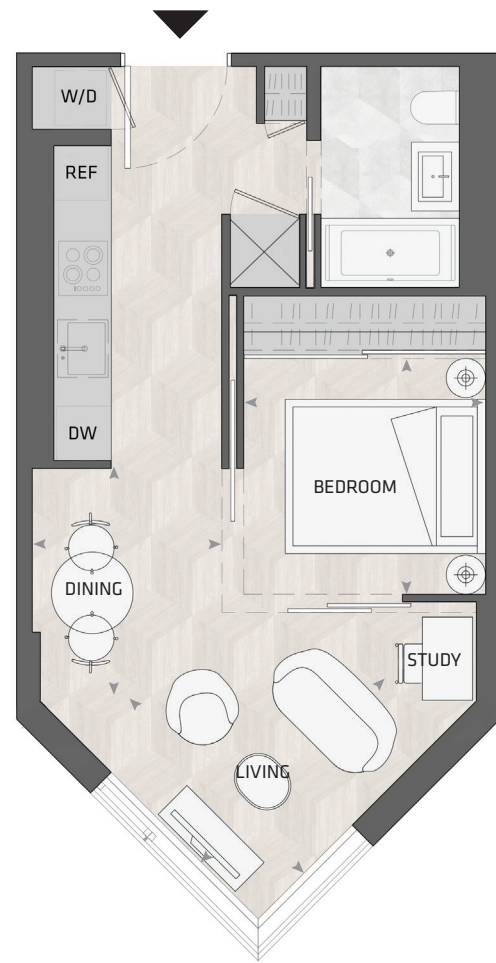


All dimensions and specifications are approximate. Certain plans are reverse or mirror image. Balcony square footages are estimated and may vary from that stated. Please see Sales Representative for details. Furniture not included. Refer to key plan for unit location and orientation. E. 6 O.E.



# KING

## HOME 810 E



1BD.77

**1 Bedroom + Study**  
**1 Bathroom**

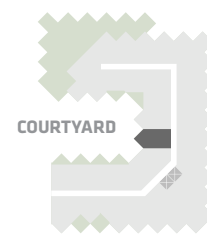
**Total Living:**  
**484 ft<sup>2</sup>**

Interior Living:  
484 ft<sup>2</sup>

Exterior Living:  
N/A

<b>LIVING</b>	8' 8" X 9' 5"
<b>DINING</b>	6' 7" X 9' 3"
<b>BEDROOM</b>	8' 9" X 8' 6"

KING STREET WEST



COURTYARD

**EAST MOUNTAIN KEYPLAN**



All dimensions and specifications are approximate. Certain plans are reverse or mirror image. Balcony square footages are estimated and may vary from that stated. Please see Sales Representative for details. Furniture not included. Refer to key plan for unit location and orientation. E. & O.E.

# KING

## HOME 805 E



1BD.18A

**1 Bedroom + Study**  
**1 Bathroom**

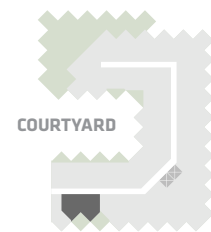
**Total Living:**  
**821 ft<sup>2</sup>**

Interior Living:  
677 ft<sup>2</sup>

Exterior Living:  
143 ft<sup>2</sup>

<b>LIVING</b>	9' 4" x 18' 10"
<b>DINING</b>	8' 10" x 6' 7"
<b>BEDROOM</b>	11' 11" x 11' 4"
<b>TERRACE</b>	9' 1" x 9' 1"

KING STREET WEST



COURTYARD

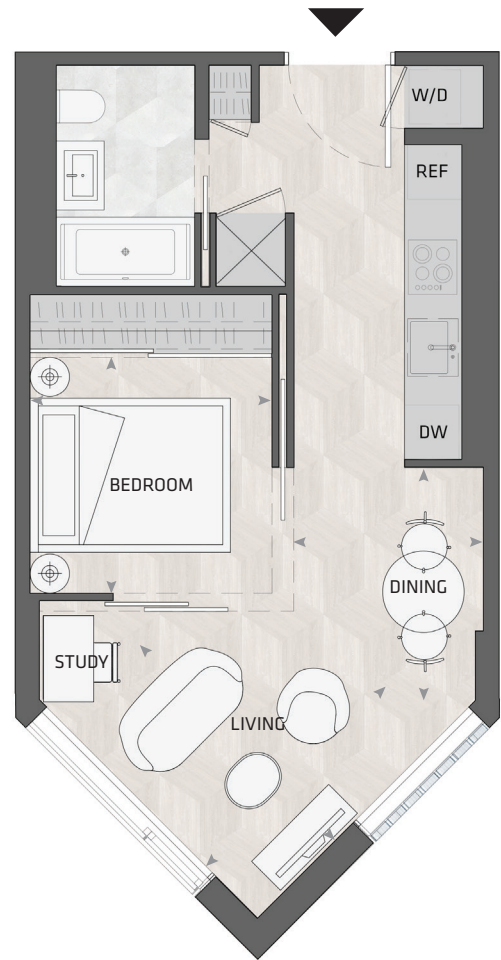
**EAST MOUNTAIN KEYPLAN**



All dimensions and specifications are approximate. Certain plans are reverse or mirror image. Balcony square footages are estimated and may vary from that stated. Please see Sales Representative for details. Furniture not included. Refer to key plan for unit location and orientation. E. & O.E.

# KING

## HOME 711 E



1BD.77

**1 Bedroom + Study  
1 Bathroom**

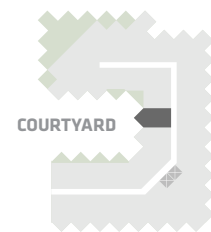
**Total Living:  
484 ft<sup>2</sup>**

Interior Living:  
484 ft<sup>2</sup>

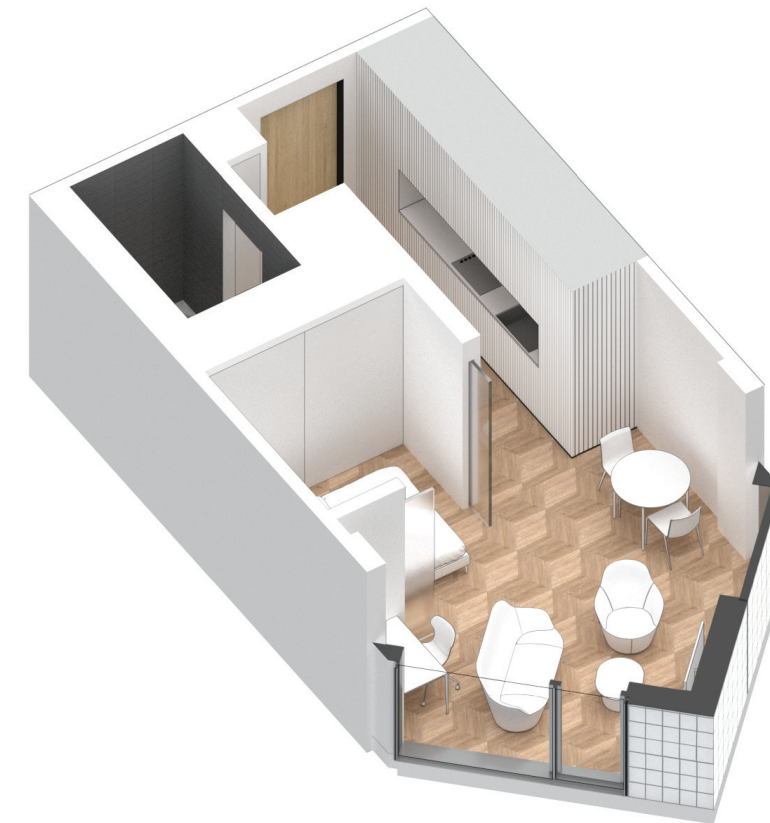
Exterior Living:  
N/A

<b>LIVING</b>	8' 8" X 9' 5"
<b>DINING</b>	6' 7" X 9' 3"
<b>BEDROOM</b>	8' 9" X 8' 6"

KING STREET WEST



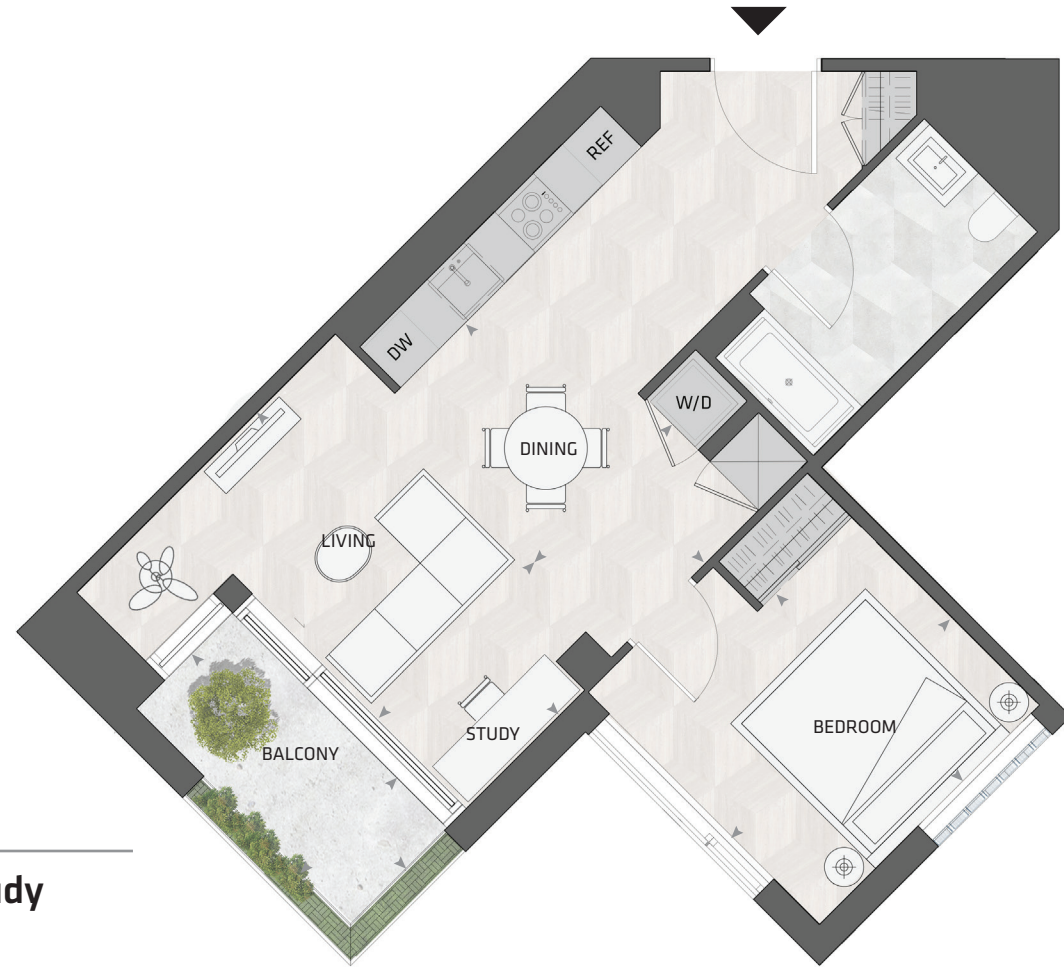
**EAST MOUNTAIN KEYPLAN**



All dimensions and specifications are approximate. Certain plans are reverse or mirror image. Balcony square footages are estimated and may vary from that stated. Please see Sales Representative for details. Furniture not included. Refer to key plan for unit location and orientation. E. & O.E.

# KING

## HOME 725 E



1BD.11

**1 Bedroom + Study  
1 Bathroom**

**Total Living:  
755 ft<sup>2</sup>**

Interior Living:  
683 ft<sup>2</sup>

Exterior Living:  
72 ft<sup>2</sup>

<b>LIVING</b>	7' 7" X 15' 6"
<b>DINING</b>	7' 4" X 12' 3"
<b>BEDROOM</b>	11' 2" X 9' 7"
<b>BALCONY</b>	4' 11" X 11' 0"

KING STREET WEST

COURTYARD

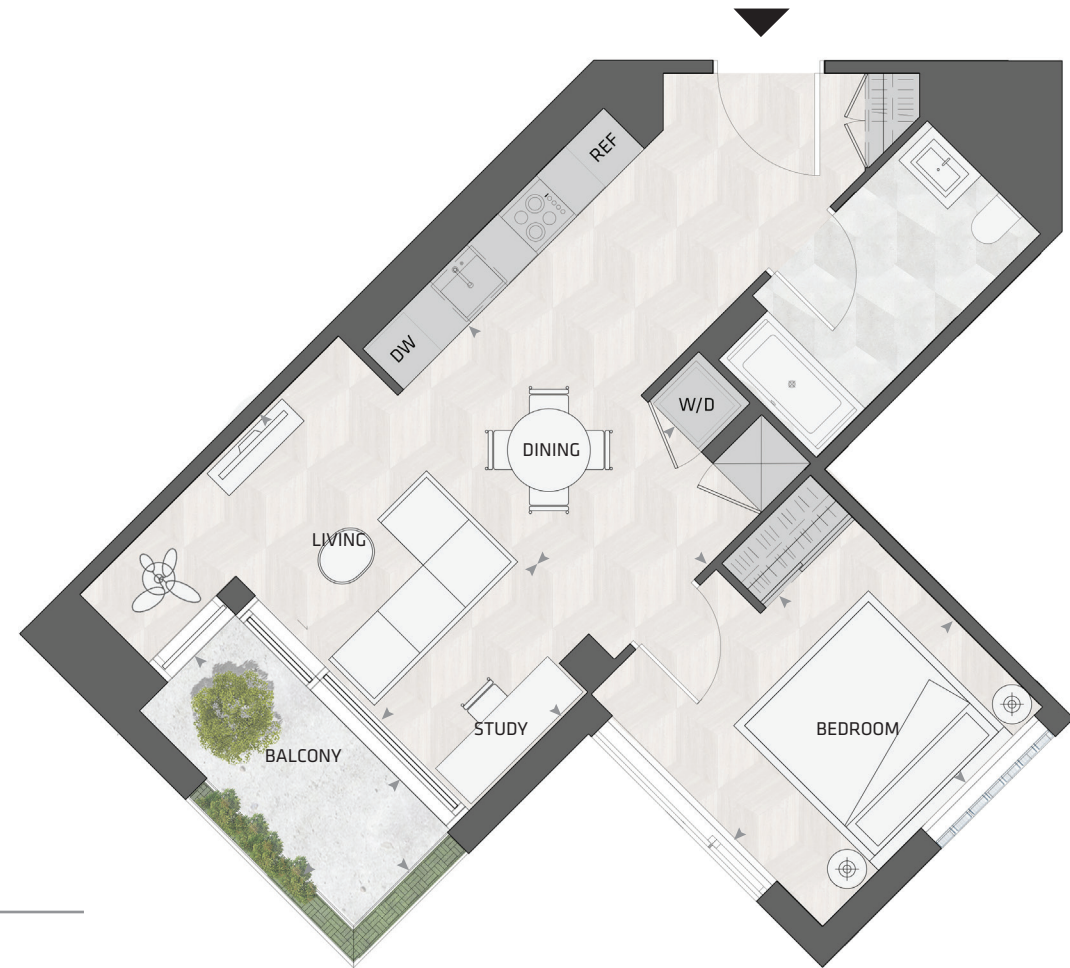
**EAST MOUNTAIN KEYPLAN**



All dimensions and specifications are approximate. Certain plans are reverse or mirror image. Balcony square footages are estimated and may vary from that stated. Please see Sales Representative for details. Furniture not included. Refer to key plan for unit location and orientation. E. & O.E.

# KING

## HOME 1512 E



1BD.11

**1 Bedroom + Study  
1 Bathroom**

**Total Living:  
755 ft<sup>2</sup>**

Interior Living:  
683 ft<sup>2</sup>

Exterior Living:  
72 ft<sup>2</sup>

<b>LIVING</b>	7' 7" X 15' 6"
<b>DINING</b>	7' 4" X 12' 3"
<b>BEDROOM</b>	11' 2" X 9' 7"
<b>ATELIER</b>	4' 11" X 5' 2"
<b>BALCONY</b>	4' 11" X 11' 0"

KING STREET WEST

COURTYARD

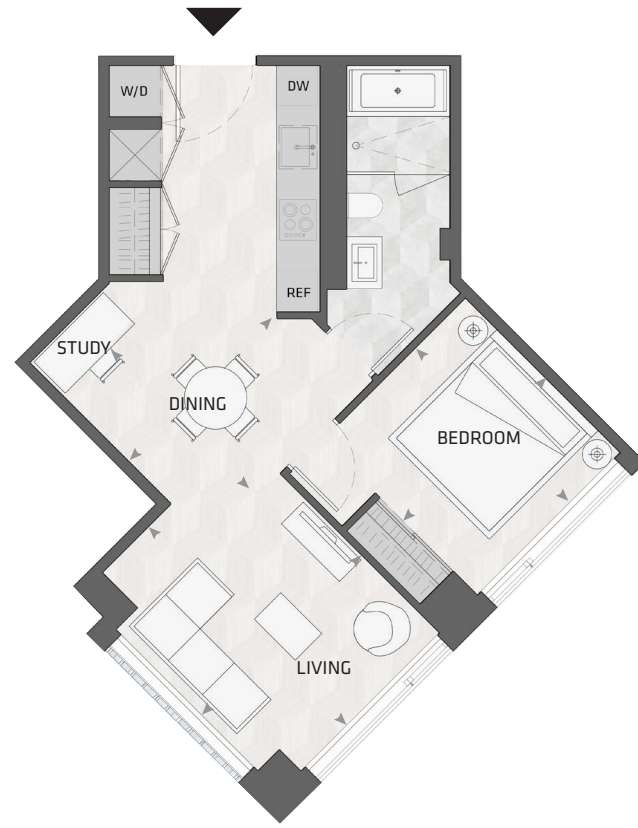
**EAST MOUNTAIN KEYPLAN**



All dimensions and specifications are approximate. Certain plans are reverse or mirror image. Balcony square footages are estimated and may vary from that stated. Please see Sales Representative for details. Furniture not included. Refer to key plan for unit location and orientation. E. & O.E.

# KING

## HOME 718 E



1BD.21

**1 Bedroom + Study**  
**1 Bathroom**

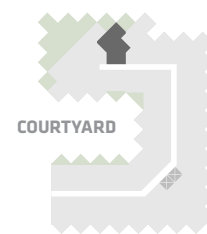
**Total Living:**  
**642 ft<sup>2</sup>**

Interior Living:  
642 ft<sup>2</sup>

Exterior Living:  
N/A

<b>LIVING</b>	10' 11" x 13' 6"
<b>DINING</b>	9' 11" x 12' 3"
<b>BEDROOM</b>	9' 9" x 10' 6"

KING STREET WEST



COURTYARD

**EAST MOUNTAIN KEYPLAN**



All dimensions and specifications are approximate. Certain plans are reverse or mirror image. Balcony square footages are estimated and may vary from that stated. Please see Sales Representative for details. Furniture not included. Refer to key plan for unit location and orientation. E. & O.E.

# KING

## HOME 722 E



1BD.04B

**1 Bedroom + Study  
1 Bathroom**

**Total Living:  
637 ft<sup>2</sup>**

Interior Living:  
565 ft<sup>2</sup>

Exterior Living:  
72 ft<sup>2</sup>

<b>LIVING</b>	7' 11" X 11' 2"
<b>DINING</b>	14' 4" X 6' 7"
<b>BEDROOM</b>	11' 2" X 9' 10"
<b>BALCONY</b>	4' 11" X 11' 0"

KING STREET WEST

COURTYARD

**EAST MOUNTAIN KEYPLAN**



All dimensions and specifications are approximate. Certain plans are reverse or mirror image. Balcony square footages are estimated and may vary from that stated. Please see Sales Representative for details. Furniture not included. Refer to key plan for unit location and orientation. E. & O.E.